

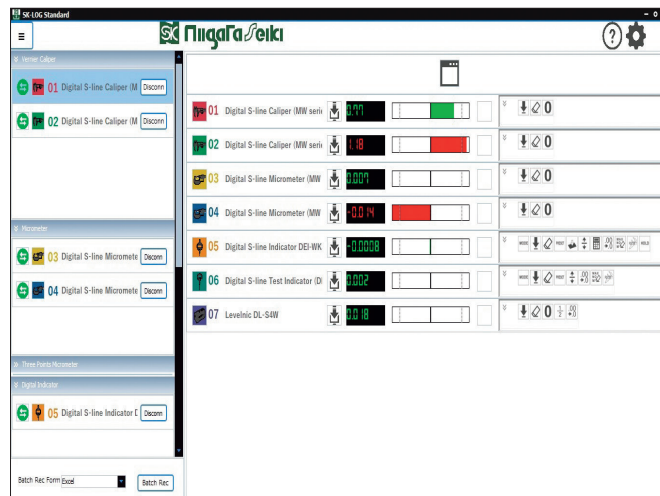
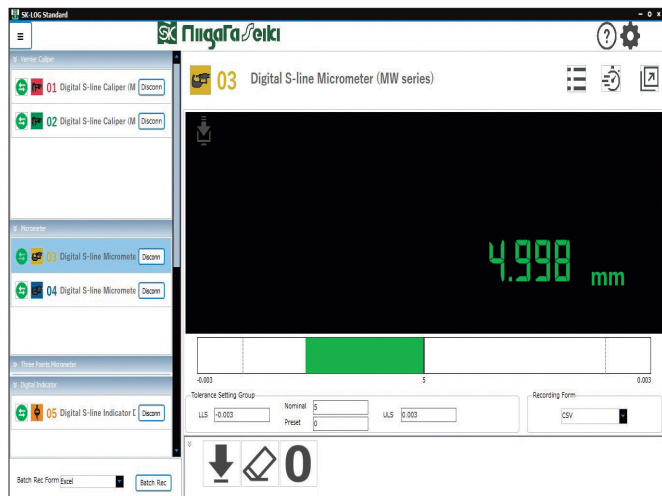
INTEGRATED SOFTWARE FOR MEASURING INSTRUMENTS SK-LOG

SK-
LOG



INTEGRATED SOFTWARE FOR MEASURING INSTRUMENTS SK-LOG

For everyone who wants to manage measurement data and focus on IoT.
Why not start risk management and efficiency improvement for your future business now?
Importing measurement data from multiple measuring instruments to PC, Pass/ Fail judge based on pre-set tolerance, and data recording are possible with this software.



Controlling multiple measuring instruments all at once



Can be connected **WIRED or WIRELESS** with data communicating measuring instruments



Measurement data of several measuring instruments can be managed with **JUST ONE SOFTWARE**



THE LATEST VERSION is always available with an automatic version upgrade function
*Internet connection is required.



When connecting multiple instruments, measurement results will be shown in a **LIST-FORM** and their **TOLERANCE** can be shown as well



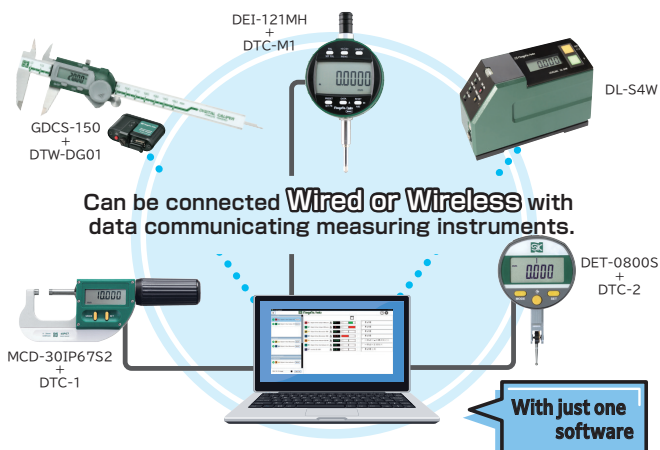
Cell-specified output function allows **VARIOUS DATA FORMATS** and **TEMPLATES** to output measurement data to



Voice reading function will let you know measurement results **WITHOUT LOOKING** at a PC monitor



WEB authentication ver. for ONLINE ENVIRONMENT or **USB dongle ver. for OFFLINE ENVIRONMENT** can be chosen depending on your work environment



Available within the selected range

	A	B	C	D
1	0.05	0.01	0.03	
2	-0.03	0.00	0.02	
3	0.02	0.04		
4	-0.01	0.02		
5	0.00	0.02		
6	0.00	-0.02		

	A	B	C	D
1	0.05	0.02	0.02	0.01
2	0.05	-0.02	0.03	0.00
3	0.05	0.02	0.05	0.02
4	0.05	0.02		
5				
6				

User-friendly data management with various data entry to Excel.
Measurements data can be entered to selected ranges.
The setting can be changed by worksheet.

	A	B	C	D
1	0.05	-0.02	0.03	
2	-0.03	0.05	0.02	
3	0.02	0.02		
4	-0.01	0.04		
5	0.01	0.00		
6	0.00	-0.01		

	A	B	C	D
1	0.05			
2	-0.03			
3	0.02			
4	-0.01			
5	0.01			
6	0.00			

	A	B	C	D
1	測定器 A	測定器 B	測定器 C	測定器 D
2	0.05	0.02	0.03	0.01
3	-0.03	0.00	-0.02	0.00
4	0.02	0.01	0.04	0.02
5	-0.01	0.00	0.03	-0.01
6				

[One-time data entry from multiple measurement instruments]

Two versions are available depending on your work environment.

Web authentication version SK-LOG-W

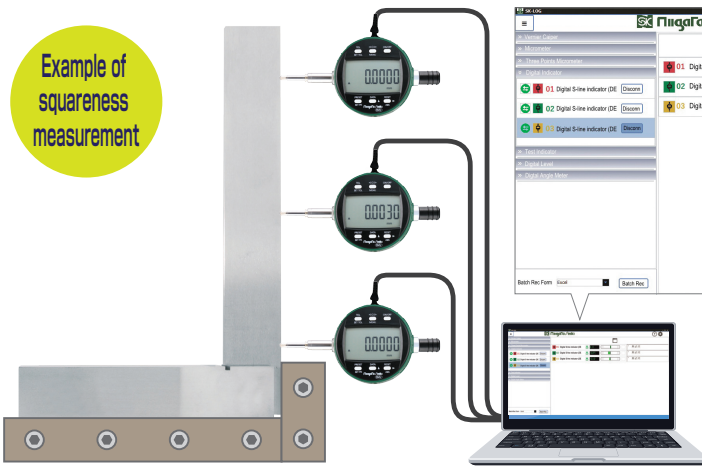
⇒ For those who have an internet connection.
Using one same product key in different PCs is also possible (can not be used at the same time).

USB dongle version SK-LOG-D

⇒ For those who wish to use without an internet connection.

INTEGRATED SOFTWARE FOR MEASURING INSTRUMENTS SK-LOG

Example of
squareness
measurement




- Install S-line digital indicators onto fixtures before use
- Squareness measurement is possible by comparative measurement with a master
- Three different data can be imported simultaneously, which will increase your work efficiency

Inspection Report

Measuring Point	①	②	③	Results
1	0.000	0.000	0.000	Passed
2	0.000	0.000	0.000	Passed
3	0.000	0.000	0.000	Passed
4	0.000	0.000	0.000	Passed
5	0.000	0.000	0.000	Passed
6	0.000	0.000	0.000	Passed
7	0.000	0.000	0.000	Passed
8	0.000	0.000	0.000	Passed
9	0.000	0.000	0.000	Passed
10	0.000	0.000	0.000	Passed
11	0.000	0.000	0.000	Passed
12	0.000	0.000	0.000	Passed
13	0.000	0.000	0.000	Passed
14	0.000	0.000	0.000	Passed
15	0.000	0.000	0.000	Passed
16	0.000	0.000	0.000	Passed
17	0.000	0.000	0.000	Passed
18	0.000	0.000	0.000	Passed
19	0.000	0.000	0.000	Passed
20	0.000	0.000	0.000	Passed

◆ Using S-line digital indicator DEI-121MH

Example of
cylinder
run-out
measurement



- For measuring outside diameter based run-out easily without using V-blocks
- Improved work efficiency can be achieved by using with S-line test indicator and SK-LOG

01 Digital S-line Test Indicator (DET Series)

NCR

0.012 mm

◆ Using Run-out gauge system ROG-221LS and S-line test indicator DET-0800S

USE

- For importing measurement data to PC

FEATURES

- When connecting multiple instruments, measuring results will be shown in a list-form and their tolerance can be shown as well
- Recording method: Manual recording - record button on measuring instrument or in the software Auto recording - time interval set in the software
- Output : To any specified application such as Excel, CSV or text file
- Cell-specified output function
- Automatic version upgrade function (Free)
- Voice reading of measurement value function
- Eye-catching command buttons for easy-to-use
- Connectable to multiple measuring instruments
- UNDO function (Excel recording only)
- Language setting - Japanese / English / Chinese
- WEB authentication ver. : For online environment
- USB dongle ver. : For offline environment

PRODUCT INCLUDES

- CD software (SK-LOG Lite ver.)
- Product key paper (WEB authentication ver.)
- USB dongle (USB dongle ver.)

REQUIRED PC SPECS

- CPU : Intel Core i3-2350M 2.30GHz
- Memory : 4GB
- ※The maximum number of connections depends on the communication method.
- ※Operation may become slow depending on PC specs and number of connected devices.
- ※Compatible measuring instruments may be limited depending on the OS.

RECOMMENDED PC SPECS

- CPU : Intel Core i3-8145U 2.30GHz or over
- Memory : 4GB or over
- OS : Windows 7, 8, 10, 11

Try SK-LOG Lite version for FREE from the link below.

*Number of connectable device: 1 unit only.

Cell-specified output function is unavailable.

SK-LOG Official site

http://www.niigataseiki.net/official/english/support/software_sklog.html



Order No.	Model No.	Version
010077	SK-LOG-W	Web authentication
010078	SK-LOG-D	USB dongle

USB FOOT PEDAL NEW!

Enter the shortcut key with your foot!
Combined with SK-LOG,
it enables measurement and recording work with both hands free.



Setup software

USE ● For foot key input. Download the dedicated software from the Niigata Seiki website and use it with any key setting.

MATERIAL

- ABS

FEATURES ● Multiple key input combinations can also be registered. ● Multiple units can be connected at the same time, each with separate key input.

- Available with SK-LOG






SPECIFICATIONS ● Operating force : Approx. 35N(3.5kgf) ● Switch life : 300,000 times or more ● Type : Momentary type ※Operates only when stepped on

- Number of recordings: selectable in software (single input or continuous input)

POWER ● USB/bus

Order No.	Model No.	OS	Connector Specs	Cable Length (m)	Body Dimensions (mm)	Weight
NEW! 152073	USB-FP1	Windows 7, 8, 10, 11	USB Type-A	Approx. 3.0	Approx. 71 × 100 × 34	140g

■ INTEGRATED SOFTWARE FOR MEASURING INSTRUMENTS SK-LOG COMPATIBLE PRODUCTS

Category	Product	Series	Page Referred
 VERNIER CALIPER	S-LINE DIGITAL VERNIER CALIPER	MW Series	171
	S-LINE DIGITAL VERNIER CALIPER	M Series	171
	DIGITAL VERNIER CALIPER	GDC Series	172 ~ 184
	DIGITAL SCRIBING VERNIER CALIPER / DIGITAL SCRIBING GAUGE	GDC Series	189 ~ 190
	DIGITAL GAP CALIPER	GDG Series	191 ~ 196
	DIGITAL DEPTH GAUGE / DIGITAL MINI DEPTH GAUGE	GDC Series / GDCS-25STG	197 ~ 199
	S-LINE DIGITAL HEIGHT GAUGE	M Series	201
 MICROMETER	S-LINE DIGITAL MICROMETER	MW Series	209
	S-LINE DIGITAL MICROMETER	S2 Series	210
	S-LINE DIGITAL BLADE MICROMETER	MCD-25IP67BS2	210
 INDICATOR	S-LINE DIGITAL INDICATOR	MW Series	243 ~ 244
	S-LINE DIGITAL INDICATOR	MH Series	243 ~ 244
	S-LINE DIGITAL MINI INDICATOR (Bluetooth)	DMI-1095SW	235
	S-LINE DIGITAL TEST INDICATOR	DET-0800S / DET-2000S	236
	S-LINE DIGITAL TEST INDICATOR (Bluetooth)	DET-0800SW / DET-2000SW	237
MEASUREMENT SENSOR	DIGITAL PRECISION INDICATOR	DPI-DRC	164
 DIGITAL LEVEL	LEVELNIC	DL-SXY	122
	LEVELNIC	DL-SXYW-S	123
	LEVELNIC	DL-SXYW-S(HID)	123
	LEVELNIC	DL-mXY	124
	LEVELNIC	DL-S4W	125
	LEVELNIC	DL-S4W(HID)	125
	LEVELNIC	DL-S3 / S3C / S3L	126 ~ 127
	LEVELNIC	DL-S2W	128
	LEVELNIC	DL-S2W(USB)	128
	LEVELNIC	DL-mini	129
	LEVELNIC	DL-m4	130
	LEVELNIC	DL-m5	131
	LEVELNIC	DL-m5W	131
 DIGITAL PROTRACTOR	DIGITAL PROTRACTOR	DP-45XYS	142
	DIGITAL PROTRACTOR	DP-80XYH	142
	DIGITAL PROTRACTOR	DP-90XYM	143
	DIGITAL PROTRACTOR	DP-60XYB	143
	DIGITAL PROTRACTOR	DP-10XY	144
	DIGITAL PROTRACTOR	DP-10S・DP-10D SET	145
	DIGITAL PROTRACTOR	DP-180	147
	BEVEL BOX	BB-180W	149



Connecting Units												
Wireless							Wired					
WIRELESS RECEIVER WI-1M	Bluetooth BOX DTW-DG01/02	Bluetooth BOX DTW-DL01	WIRELESS ADAPTER FOR LEVELNIC DL-BW (USB)	WIRELESS ADAPTER FOR LEVELNIC DL-BW2 (USB)	USB receiving unit	RS232C receiving unit	DATA TRANSFER CABLE DTC-1	DATA TRANSFER CABLE DTC-2/ DTC-2-DS	DATA TRANSFER CABLE DTC-M1	CONNECTING CABLE DL-P6	CONNECTING CABLE DL-P7	USB cable
P168	P168	P134	P134	P135	—	—	P208	P232	P170	P135	P135	—
○												
									○			
	○											
	○											
	○											
	○											
									○			
○												
							○					
							○					
○									○※1			
									○			
Built-in Bluetooth								○				
								○				
Built-in Bluetooth								○				
												○ (Off - the - shelf)
		△※2	○	○※2						○ (Included)	○	
					○ (Included)					○	○	
			○	○※2						○	○	
		△	○	○※2						○	○	
		○※2			○ (Included)					○	○	
		○	○	○※2						○	○	
		○	○	○						○	○	
						○ (Included)						
					○ (Included)							
		○※2	○	○※2						○	○	
		○	○	○※2						○	○	
		○	○	○※2						○	○	
		○			○ (Included)					○	○	
												○ (Off - the - shelf)
												○ (Off - the - shelf)
												○ (Off - the - shelf)
												○ (Off - the - shelf)
			○	○※2						○ (Included)	○	
			○	○※2						○ (Included)	○	
												○ (Included)
Built-in Bluetooth												

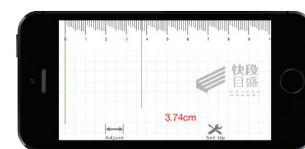
△:Switchable to 1-axis measurement ※1:Can not be used with Wireless function at the same time ※2:Can not be installed with the included mounting plate

Measuring Apps for Smartphone

— Measurement Apps for Smartphone —

SK K Aidan Ruler

The well-reputed easy-to-read KAIDAN ruler is now available as an app!



Supported models iPhone: iOS 13.0 or later

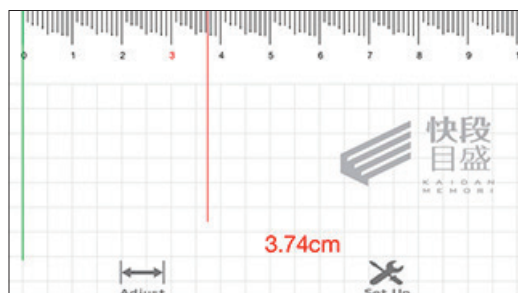
Main functions

Simple ruler with no extra functions.

Calibration function and unit switching between cm and mm are available.

※ The width is adjusted according to the device, but it may be out of alignment depending on the device.

Please use the Adjust function to adjust the 3cm of the actual ruler and the 3cm of the terminal.



Staircase shape makes it easy to see at a glance.
Don't misread.



Calibration function

Download Free Version



Download from App Store



Unit switching between cm and mm are available.

SK LEVEL

Simple and easy-to-use leveler app with no extra functions

Supported models iPhone: iOS 13.0 or later

Main functions

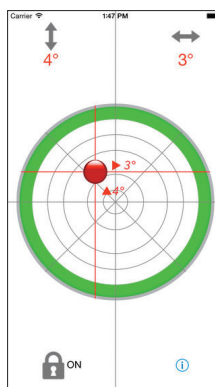
Level application with 0-point correction function, lock function, and angle line display.

Please use it as a guide for a level.

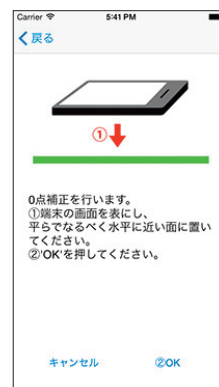
Download Free Version



Download from App Store



Lock function



0-point correction function

