

# SCALE LOUPE WITH LED LIGHT

Equipped with LED light, suitable for observation in dark places



With LED light on

Without LED light on

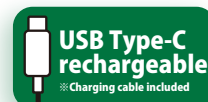


NLSL-10-1

Storage case

Magnification  
NLSL-10-1 **10x**

Magnification  
NLSL-15-1 **15x**



Point

**Effective Dia 1.4 times\* larger**

※Compared to our previous model

Its effective diameter is 28mm, 1.4x larger than the previous model (LSL-35). A larger lens for easier visibility.



Point

**4 times\* brighter**

※Compared to our previous model

In addition to the brightness, attenuation over time has been improved, making it brighter and easier to see.



**6 built-in LED Lights**

For observation without worrying about the light source

**Rechargeable**

Charging time: Approx. 2 hrs.

**Built-in rechargeable battery**

Lithium-ion battery

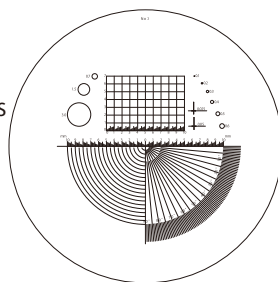
Point

**Reticle included**

Graduation scale with 0.1mm intervals  
Reticle for NLSL-10-1/ NLSL-15-1 (mutual)

Accessories:

- Reticle (pre-attached) x1
- Eyepiece cap x1
- USB charging cable (cord length: approx. 50cm) x1
- Storage case x1
- Cleaning cloth x1



Point

**Two types available, selectable by magnification**

NLSL-10-1  
**(10x)**



NLSL-15-1  
**(15x)**

## SPECIFICATIONS

Order No.	Model No.	Magnification	Field of View	Effective Diameter	Reticle	Body Size	Weight	Operating Temperature	Continuous Lighting Time
011296	NLSL-10-1	10x	26mm	28mm	φ 35 × D1.3mm	φ 47 × H59mm	Approx. 110g	5°C~40°C	Approx.40 min.*
011297	NLSL-15-1	15x	14mm				Approx. 112g		

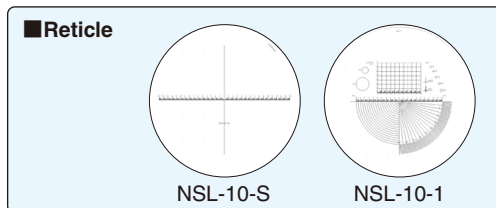
※The shortest time when the battery is fully charged. It may vary depending on usage condition.

### SCALE LOUPE NSL-10-S / NSL-10-1

10x magnification scale loupe with a wide field of view and easy to use



NSL-10-S



**Accessories:** ● Reticle (pre-attached) x1 ● Storage case x1  
● Eyepiece cap x1 ● Cleaning cloth x1

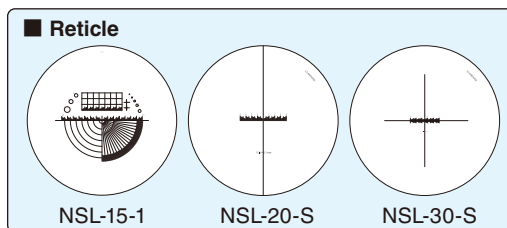
Order No.	011291	011292
Model No.	NSL-10-S	NSL-10-1
Magnification	10x	
Field of View	26mm	
Effective Diameter	20mm	
Lens Material	Glass	
Reticle	φ35×D1.3mm	
Body Size	φ45×H45mm	
Weight	Approx. 73g	

### SCALE LOUPE NSL-15-1/NSL-20-S/NSL-30-S

Scale loupe with higher magnifications of 15x, 20x, and 30x for detailed observation



NSL-15-1



**Accessories:** ● Reticle (pre-attached) x1 ● Storage pouch x1  
● Cleaning cloth x1

Order No.	011293	011294	011295
Model No.	NSL-15-1	NSL-20-S	NSL-30-S
Magnification	15x	20x	30x
Field of View	12mm	10mm	5mm
Effective Diameter	16mm		
Lens Material	Glass		
Reticle	φ26×D1.6mm		
Body Size	φ35×H38mm	φ35×H34mm	φ35×H31mm
Weight	Approx. 35g		

### SCALE LOUPE WITH LED LIGHT NLSL-10-1/NLSL-15-1

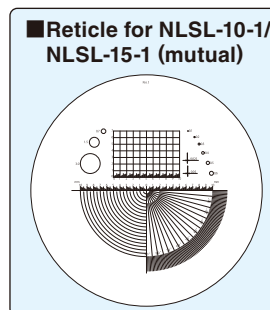
Equipped with a rechargeable lithium-ion battery and LED light, suitable for observation in dark places



NLSL-10-1



**Accessories:** ● Reticle (pre-attached) x1 ● Eyepiece cap x1  
● USB charging cable (cord length: approx. 50cm) x1  
● Storage case x1 ● Cleaning cloth x1



Order No.	011296	011297
Model No.	NLSL-10-1	NLSL-15-1
Magnification	10x	15x
Field of View	26mm	14mm
Effective Diameter	28mm	28mm
Lens Material	Glass	
Reticle	φ35×D1.3mm	
Body Size	φ47×H59mm	
Weight	Approx. 110g	Approx. 112g
Operating Temperature	5°C~40°C	
Built-in Rechargeable Battery	Lithium-ion Battery	
Continuous Lighting Time	Approx. 40 min.*	
Charging Time	Approx. 2 hrs.	

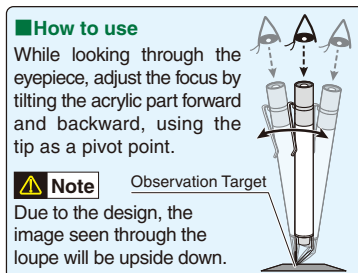
\*The shortest time when the battery is fully charged. It may vary depending on usage condition.

### CLIP LOUPE NPL-50 / NPL-25

High-magnification loupe with a clip, convenient to carry around



NPL-50



Order No.	011298	011299
Model No.	NPL-50	NPL-25
Magnification	50x	25x
Field of View	2mm	3mm
Effective Diameter	6.8mm	
Lens Material	Glass	
Body Size	φ13×L125mm (Without the clip)	
Weight	Approx. 22g	

※Weight, size, and other details are approximate.  
※The appearance and specifications are subject to change without prior notice due to product improvements.  
※The color may slightly differ between the printed materials and the actual product.

**Niigata Seiki Co., Ltd.**

5-3-14, Tsukanome, Sanjo, Niigata, Japan, 955-0055  
Tel.: +81-256-33-5522 Fax.: +81-256-33-5518  
MAIL intl.sales@niigataseiki.co.jp  
URL http://www.niigataseiki.co.jp

■Distributors