

SK **ニガタセiki**



www.niigataseiki.co.jp



HIGH PRECISION DIGITAL LEVEL

LEVELNIC



※The appearance and specifications are subject to change without notice for product improvement.

※Colors may differ slightly between the printed image and the actual product.

SK **Niigata Seiki Co., Ltd.**

5-3-14, Tsukanome, Sanjo, Niigata, Japan, 955-0055
Tel.: +81-256-33-5522 Fax.: +81-256-33-5518
MAIL intl.sales@niigataseiki.co.jp
URL <http://www.niigataseiki.co.jp>

■ **Distributor**

SK **ニガタセiki**

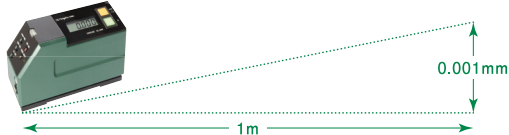
Supplied a lot to industries of machine tools and semi-conductor manufacturing equipment

Digital precision level LEVELNIC

The inclination to the earth's level can be measured digitally with high accuracy and more quickly than ever before.

High accuracy

- Minimum reading 0.001mm/m 0.0001°.
- The unit of inclination, mm/m represents the inclination at a distance of 1 meter. Conventional bubble tube levels have an accuracy of 0.02mm/m, however LEVELNIC can measure at a higher accuracy of 0.001mm/m or 0.01mm/m.



Compared to bubble tube level

Visibility is different
The digital display improves numerical reading speed and there are no reading errors between operators.

Measurement speed is different
The bubble tube level takes about a minute for the bubbles to settle, however the digital precision level LEVELNIC takes within 10 seconds until the value settles.



Case Studies

LEVELNIC is not limited to a specific field, but has been introduced for various purposes by various industries.

Machine tool manufacturer

Leveling, stage flatness/ squareness measurement, pitching/ rolling measurement and column measurement

Introduced model : DL-SXY

Their feedback

The conventional method of using a 1-axis level for leveling 2-axis can be replaced with this 2-axis level. There is no more need to relocate the level and the work time was reduced to a half of the conventional method.



Linear motion product manufacturer

Flatness/straightness measurement and pitching/ rolling measurement

Introduced model : DL-S4W

Their feedback

Pitching and rolling data can be obtained while transmitting data wirelessly. It improves work efficiency by eliminating hand-writing work and realizes high-accuracy measurement at the same time.



Automobile manufacturer

Flatness control of surface plates used in production lines and column measurement

Semiconductor manufacturer

Leveling of semiconductor manufacturing equipment and flatness measurement

Liquid crystal manufacturer

Flatness measurement of inspection stages

Aerospace industry

Flatness control of surface plates used in production lines

Shipbuilding industry

Flatness measurement and leveling of ship bottom engine

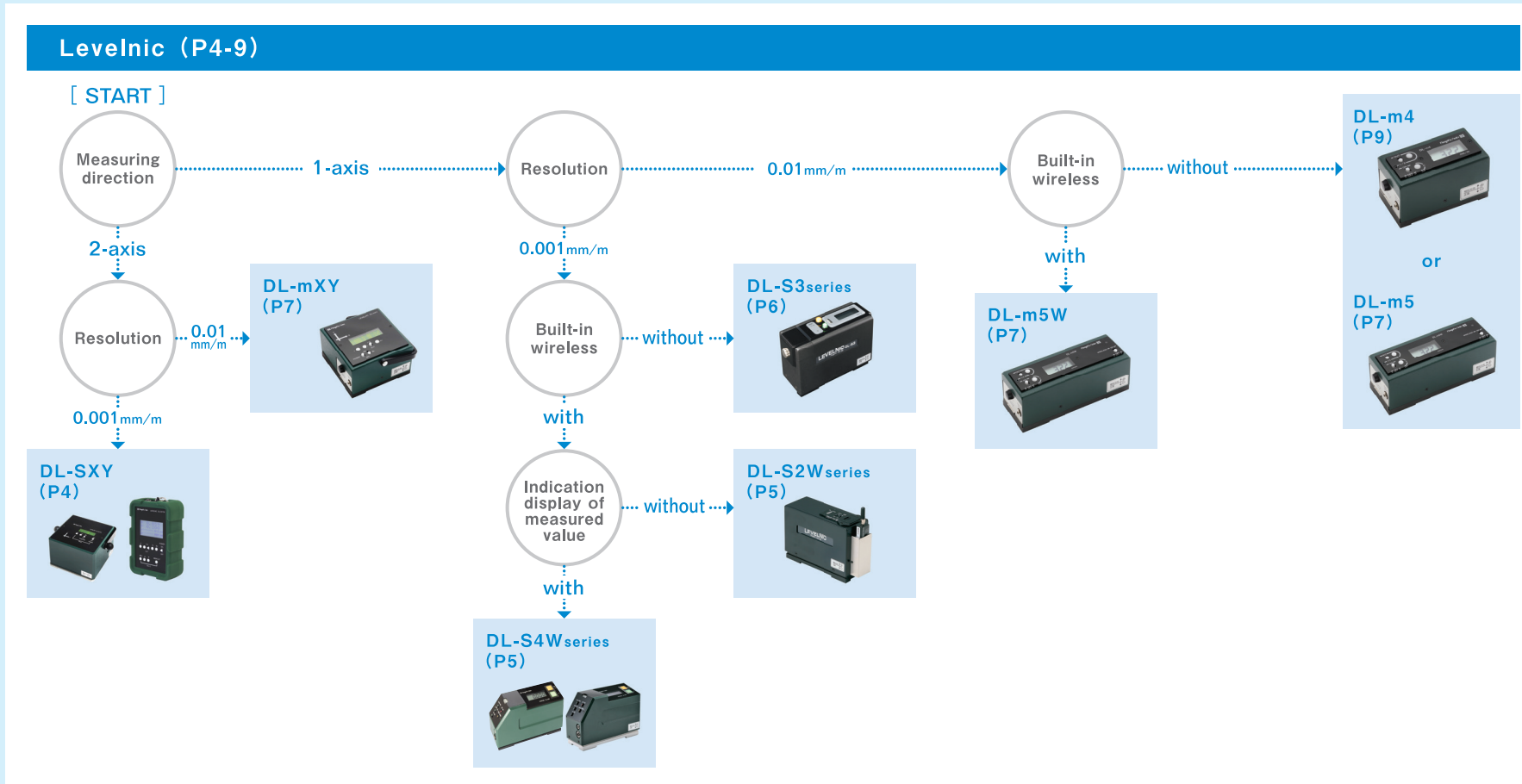
Calibration service provider

Calibration of surface plate

Electronics industry

Leveling of electrical discharge machine

Levelnic series selection chart



Software (P10-11)

Optional products (P12-13)

Case Studies

Introduced model : DL-S3 + S4W + FL

Calibration service provider
Chose this product for on-site calibration of customer's surface plate. Conventional tedious flatness calculation is no longer necessary by using it with Flatness software.

Introduced model : DL-S3 + DTW-DL01 + FL

Construction heavy equipment manufacturer
Performs flatness measurement of surface plate with wireless data transmission of measured value.

Introduced model : DL-S2W + LEVLOG

Machine tool manufacturer
Data of multiple units is saved 24 hours. Numerical displacement of each part is also being monitored during production.

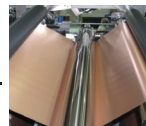
Introduced model : DL-S4W + FL

Industrial engineering
Adopted these products for relocation/ installation and service (maintenance/ inspection/ adjustment) of machine tools. Wireless data acquiring helped improve work efficiency.

Example of customized specifications

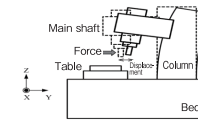
V-grooved base

Suitable for leveling and inclination measurement of cylindrical workpieces. V-groove angle can be changed according to workpiece size.
[Example of use]
Roller parallelism check



L Base

Suitable for squareness measurement of column.
[Example of use]
Squareness measurement of column



Adjustable pitch base

Suitable for measuring flatness and straightness with various pitches.
[Example of use] Flatness measurement of surface plate

Built-in air bubble tube

For minimizing errors caused by incorrect measurement direction.
[Example of use] Leveling of machines

LEVELNIC DL-SXY

The popular 2-axis simultaneous measurement model!
With a wireless handy display for checking the measurements at a distance.



- Capable to measure 2-axis in X and Y direction at the same time. Stainless steel base that eliminates the need for rust-proofing.
- When the Sensor radio is turned off, the measured value is displayed on the Sensor display window, and the tilt can be measured by itself.
- Up to 42 sets (84) of measured data can be saved in the Display's internal memory. Checking or outputting the saved data later is possible.

Reading ^{*1} Accuracy	Operating temperature 17 ~ 23°C	± 0.85%rdg (within ± 1.999mm/m) or whichever larger in repeated measures ± 1.0%rdg (over ± 2mm/m)
	Operating temperature 0 ~ 40°C	± 2.6%rdg (within ± 1.999mm/m) or whichever larger in repeated measures ± 2.7%rdg (over ± 2mm/m)
Repeatability	Within ± 0.005mm/m	
Dimensions	DL-SXYW	L145 × W189 × H100mm
	DL-DXYW	L154 × W96 × H38mm (without silicon cover)
		L158 × W105 × H48mm (with silicon cover)

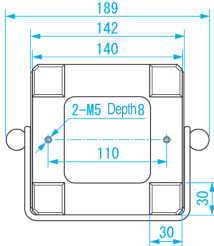
*1: %rdg (percent reading) indicates percentage of the reading.
± 0.85%rdg can contain an error of ± 0.0085mm/m if the reading is 1.000mm/m.

Order No.	Model No.	Weight
010124	DL-SXY	DL-SXYW 3.6kg (incl. batteries) / DL-DXYW 0.5kg (incl. silicon cover and batteries)



Data management with software 「SK-LOG」!
*SK-LOG Lite version, connectable to only 1 device is included.

●Dimensions Base (Units:mm)



LEVELNIC DL-SXYW-S SERIES NEW!

2-axis measurement sensor single-use device.
Able to check the measurements both on PC screen and the main unit display.



- 2-axis measurement in X and Y directions with one unit.
- Stainless steel base that eliminates the need for rust-proofing.
- The measured value is displayed on the sensor display, and the inclination can be measured by single unit.

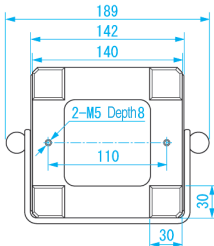
Model No.	DL-SXYW-S	DL-SXYW-S (HID)
Features	●Bluetooth is already connected to the included receiver unit (RS-232C)	●Connected by Bluetooth HID to tablet and smart phone for keyboard use ●Device name is able to be identified by its individual number ●Output data includes device name to prevent receiving mistakes
Reading ^{*1} Accuracy	Operating temperature 17 ~ 23°C	± 0.85%rdg (within ± 1.999mm/m) or whichever larger in repeated measures ± 1.0%rdg (above ± 2mm/m)
	Operating temperature 0 ~ 40°C	± 2.6%rdg (within ± 1.999mm/m) or whichever larger in repeated measures ± 2.7%rdg (above ± 2mm/m)
Repeatability	Within ± 0.005mm/m	
Dimension	L145 × W189 × H100mm	

*1: %rdg (percent reading) indicates percentage of the reading.
± 0.85%rdg can contain an error of ± 0.0085mm/m if the reading is 1.000mm/m.

Order No.	Model No.	Weight
NEW! 010129	DL-SXYW-S	3.6kg
NEW! 010130	DL-SXYW-S (HID)	3.6kg



●Dimensions Base (Units:mm)



LEVELNIC DL-S4W SERIES NEW!

Wireless system standard equipment!
Measurement value can be checked both on PC screen and the device's display panel.



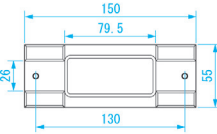
- Switchable between wireless / wired for saving of electricity and long-time use.
- USB receiving unit installed. The driver is supported by the automatic recognition system.

Model No.	DL-S4W / DL-S4W SUS / DL-S4W-E		DL-S4W(HID)
Features	●Bluetooth is already connected to the included receiver unit (USB)		●Connected by Bluetooth HID to tablet and smart phone for keyboard use ●Device name is able to be identified by its individual number ●Output data includes device name to prevent receiving mistakes
Reading ^{*1} Accuracy	Operating temperature 17 ~ 23°C	± 0.85%rdg (within ± 1.999mm/m) or whichever larger in repeated measures ± 1.0%rdg (above ± 2mm/m)	
	Operating temperature 0 ~ 40°C	± 2.6%rdg (within ± 1.999mm/m) or whichever larger in repeated measures ± 2.7%rdg (above ± 2mm/m)	
Repeatability	Within ± 0.005mm/m • ± 0.0003°		
Dimension	L158 × W61 × H107mm		

*1: %rdg (percent reading) indicates percentage of the reading.

Order No.	Model No.	Attached Software Language	Base Material	Weight
010053	DL-S4W	Japanese	Cast iron	2.0kg
010111	DL-S4W SUS		Stainless steel SUS303	2.0kg
010085	DL-S4W-E	English	Cast iron	2.0kg
NEW! 010131	DL-S4W (HID)	Japanese	Cast iron	2.0kg

●Dimensions Base (Units:mm)



LEVELNIC DL-S2W SERIES

Recommended for machine tool manufacturers!
Same specification as DL-S3, and wireless system equipped.
The maximum wireless communication distance is 50~100m.



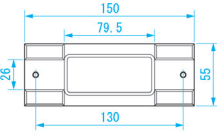
- Wireless data transmission.
- Measurement data can be displayed on PC, using receiver and data display software.
- *This model does not have display on the unit. PC or display unit is required for display the measured values.

Reading ^{*1} Accuracy	Operating temperature 17 ~ 23°C	± 0.85%rdg (0 ~ ± 1.999mm/m, 0 ~ ± 0.1145°) or whichever larger in repeated measures ± 1.0%rdg (± 2 ~ ± 5mm/m, ± 0.1146 ~ ± 0.2865°)
	Operating temperature 0 ~ 40°C	± 2.6%rdg (0 ~ ± 1.999mm/m, 0 ~ ± 0.1145°) or whichever larger in repeated measures ± 2.7%rdg (± 2 ~ ± 5mm/m, ± 0.1146 ~ ± 0.2865°)
Repeatability	Within ± 0.005mm/m • ± 0.0003°	
Dimension	L173 × W59 × H147mm (H: up to top of antenna)	

*1: %rdg (percent reading) indicates percentage of the reading.

Order No.	Model No.	Receiving Unit Type	Attached Software Language	Base Material	Weight
010017	DL-S2W	D-SUB9	Japanese	Cast iron	2.1kg
010054	DL-S2W (USB)	USB		Stainless steel SUS303	2.1kg
010114	DL-S2W SUS	D-SUB9			2.1kg
010115	DL-S2W (USB) SUS	USB			2.1kg
010029	DL-S2W-E	D-SUB9	English	Cast iron	2.1kg

●Dimensions Base (Units:mm)



LEVELNIC DL-S3 SERIES

Why not make measurement easier and quicker than with the bubble tube method?
Numerical measurement with a resolution of 0.001 mm/m and no data reading error!
Please feel free to contact us if you have any questions.



- The 0-call and 1/2-call switches to determine criteria. Operations such as halving the display can be done with a single touch.
- The DL-S3C is equipped with a rechargeable battery. Since the batteries can be recharged when not in use, there is no need to purchase dry batteries, making it economical.

Reading*1 Accuracy	Operating temperature 17 ~ 23°C	± 0.85%rdg (0 ~ ± 1.999mm/m, 0 ~ ± 0.1145°) or whichever larger in repeated measures ± 1.0%rdg (± 2 ~ ± 5mm/m, ± 0.115 ~ ± 0.286°)
	Operating temperature 0 ~ 40°C	± 2.6%rdg (0 ~ ± 1.999mm/m, 0 ~ ± 0.1145°) or whichever larger in repeated measures ± 2.7%rdg (± 2 ~ ± 5mm/m, ± 0.115 ~ ± 0.286°)
Repeatability	Within ± 0.005mm/m • ± 0.0003°	
Dimension	L172 × W65 × H129mm	

*1: %rdg (percent reading) indicates percentage of the reading.

Order No.	Model No.	Battery Type	Base Material	Weight
010013	DL-S3	9V dry cell	Cast iron	2.2kg
010030	DL-S3C	Ni-MH battery		2.2kg
010112	DL-S3 SUS	9V dry cell	Stainless steel SUS303	2.2kg
010113	DL-S3C SUS	Ni-MH battery		2.2kg
010018	DL-S3V	9V square battery	Cast iron (V-groove base ²)	2.2kg

- *2 : V-Groove base specification
- Rolling error : Bubbles in sub-bubble tube within 0.1mm/m in the baseline.
 - Flat and V-groove error : 0.05 mm/m max.
 - V-groove angle 130° (up to φ65mm cylindrical object)

LEVELNIC L-TYPE DL-S3L

LEVELNIC DL-S3 with magnetic L-type base.
Magnetic base enables Z-axis measurement in addition to X-axis and Y-axis.
Super-strong magnet allows column measurement of machine tools and other equipment!



- L-type magnetic base enables vertical measurement.
- Equipped with a magnet for convenient Z-axis measurement.
- With 130° V-groove.

Order No.	Model No.	Base Squareness (mm)	Weight
010027	DL-S3L	within ± 0.04	5.5kg

Please refer to DL-SL (P13) for detailed specifications of magnetic L-type base. See above for DL-S3 specifications.

LEVELNIC DL-mXY NEW!

Compact m-series model with capability of 2-axis simultaneous measurement!
Possible to output data signals for data recordings.



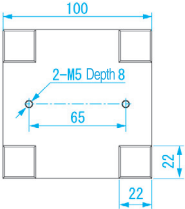
- This compact XY2-axis measuring instrument is 14mm lower than the DL-m3.
- The measured value is displayed on the sensor display, and the inclination can be measured by single unit.

Reading*1 Accuracy	Operating temperature 17 ~ 23°C	± 0.02mm/m or ± 3%rdg whichever is larger (0 ~ ± 1.99mm/m) ± 4%rdg (± 2 ~ ± 5mm/m)
	Operating temperature 0 ~ 40°C	± 0.02mm/m or ± 5%rdg whichever is larger (0 ~ ± 1.99mm/m) ± 6%rdg (± 2 ~ ± 5mm/m)
Repeatability	Within ± 0.01mm/m	
Dimension	L105 × W104 × H59mm	

*1: %rdg (percent reading) indicates percentage of the reading.
± 3%rdg can contain an error of ± 0.03mm/m if the reading is 1.00mm/m.

Order No.	Model No.	Weight
NEW! 010126	DL-mXY	1.4kg

• Dimensions Base (Units:mm)



LEVELNIC DL-m5 / DL-m5W NEW!

Lowest height in m-series of 56mm!
Able to be used for both outputting measured values by PC and by main unit.



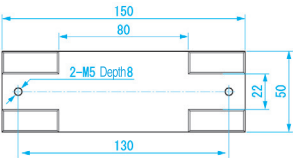
- Equipped with jig fixing screw holes allows attachment of special bases or jigs.
- Standard equipped wireless system. Wireless and cable output to be chosen. (DL-m5W)

Reading*1 Accuracy	Operating temperature 17 ~ 23°C	± 0.02mm/m or ± 3%rdg whichever is larger (0 ~ ± 1.99mm/m) ± 4%rdg (± 2 ~ ± 5mm/m)
	Operating temperature 0 ~ 40°C	± 0.02mm/m or ± 5%rdg whichever is larger (0 ~ ± 1.99mm/m) ± 6%rdg (± 2 ~ ± 5mm/m)
Repeatability	Within ± 0.01mm/m	
Dimension	L155 × W50 × H56mm	

*1: %rdg (percent reading) indicates percentage of the reading.
± 3%rdg can contain an error of ± 0.03mm/m if the reading is 1.00mm/m.

Order No.	Model No.	Weight
NEW! 010127	DL-m5	1.0kg
NEW! 010128	DL-m5W	1.0kg

• Dimensions Base (Units:mm)



LEVELNIC DL-m3 SERIES

Digital display with 0.01mm/m resolution.
Unlike bubble level, there is no delay waiting for reading to settle, reducing human error!



DL-m3

0.01mm/m

Measuring range
±5.00mm/m

1-axis

Wired output

More information

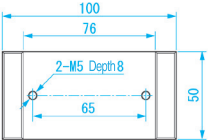
- Compact, light weight, popular type.

Reading ^{*1} Accuracy	Operating temperature 17 ~ 23°C	± 0.02mm/m or ± 3%rdg whichever is larger (0 ~ ± 1.99mm/m)
	Operating temperature 0 ~ 40°C	± 4%rdg (± 2 ~ ± 5mm/m)
Repeatability	Within ± 0.01mm/m	
Dimension	L105 × W50 × H73mm (Dimensions Base : L100 × W50mm)	

*1: %rdg (percent reading) indicates percentage of the reading.

Order No.	Model No.	Base Material	Weight
010015	DL-m3	Cast iron	880g
010118	DL-m3 SUS	Stainless steel SUS303	920g

- Dimensions Base (Units:mm)



Stainless steel base type (DL-m3 SUS)



LEVELNIC DL-m3LS

Levelnic DL-m3 on L-type Base.
X-axis, Y-axis as well as Z-axis measurements are possible!



- Compact, light weight, popular type.
- L-type base allows measurements in the vertical direction.
- With 130° V-groove.
- *Base does not have magnetic capability.

Order No.	Model No.	Base Squareness (mm)	Weight
010019	DL-m3LS	Within ± 0.035	2.8kg

Please refer to DL-mL (P13) for detailed specifications of L-type base.
See above for DL-m3 specifications.

0.01mm/m

Measuring range
±5.00mm/m

1-axis

Wired output

More information

LEVELNIC DL-m4 NEW!

Compact digital level with 0.01mm/m resolution Digital level.
Equipped with jig fixing screw holes as standard.



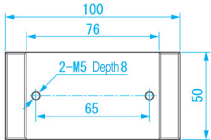
- Compact, light weight, popular type, 14mm lower than DL-m3.
- Equipped with jig fixing screw holes allows attachment of special bases or jigs.

Reading ^{*1} Accuracy	Operating temperature 17 ~ 23°C	± 0.02mm/m or ± 3%rdg whichever is larger (0 ~ ± 1.99mm/m)
	Operating temperature 0 ~ 40°C	± 4%rdg (± 2 ~ ± 5mm/m)
Repeatability	Within ± 0.01mm/m	
Dimension	L105 × W50 × H59mm	

*1: %rdg (percent reading) indicates percentage of the reading.
± 3%rdg can contain an error of ± 0.03mm/m if the reading is 1.00mm/m.

Order No.	Model No.	Weight
NEW! 010125	DL-m4	770g

- Dimensions Base (Units:mm)



0.01mm/m

Measuring range
±5.00mm/m

1-axis

Wired output

More information

LEVELNIC EL-01A SERIES

High-sensitive 0.01mm/m.
Pendulum type level with analog output.
Data can be recorded by connecting the dedicated connection cable to an analog recorder!



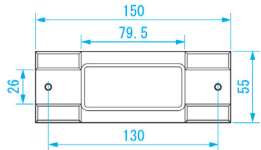
EL-01A

- Sensitivity is switchable in three steps.

Pointing Error	Within ± 0.5 Division
Repeatability	Within ± 0.005mm/m
Dimension	L150 × W85 × H195mm +Excluding handle

Order No.	Model No.	Base Material	Weight
010005	EL-01A	Cast iron	2.9kg
010116	EL-01A SUS	Stainless steel SUS303	2.9kg

- Dimensions Base (Units:mm)



MIN. 0.01mm/m

Measuring range
MAX. ±2mm/m

1-axis

Wired output

More information

INTEGRATED SOFTWARE FOR MEASURING INSTRUMENTS SK-LOG

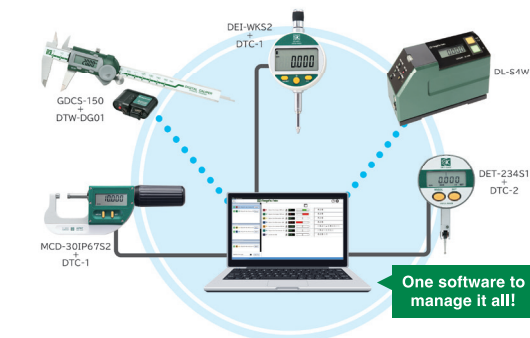


For everyone who wants to manage measurement data and focus on IoT!
Why not start risk management and efficiency improvement for your future business now?
Importing measurement data from multiple measuring instruments to PC,
Pass/ Fail judge based on pre-set tolerance, and data recording are possible with this software.



Controlling multiple measuring instruments all at once

Can be connected **WIRED** or **WIRELESS** with data communicating measuring instruments!



One software to manage it all!

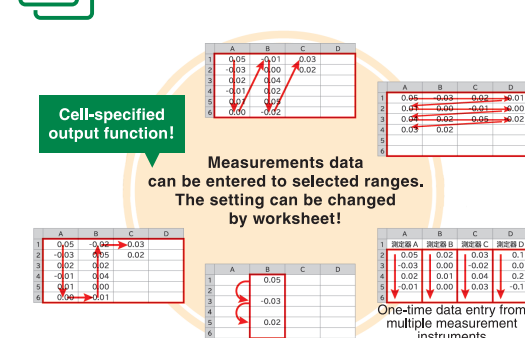
Measurement data of several measuring instruments can be managed with **JUST ONE SOFTWARE!**

THE LATEST VERSION is always available with an automatic version upgrade function!
*Internet connection is required.

When connecting multiple instruments, measurement results will be shown in a **LIST-FORM** and their **TOLERANCE** can be shown as well.

Voice reading function will let you know measurement results **WITHOUT LOOKING** at a PC monitor!

User-friendly data management with **VARIOUS DATA ENTRY to EXCEL!**



Highly flexible Excel input

ONE-TIME DATA ENTRY FROM MULTIPLE MEASUREMENT INSTRUMENTS as well!
VARIOUS STYLES OF FORMATS can be used for data entry such as an inspection report or calibration certificate!

Depending on your work environment, there are **WEB authentication ver. that do not require hardware** and **USB dongle ver. that can be used in an offline environment!**

Web authentication version SK-LOG-W

For those who wish to use in an environment **WITH internet access**.
*It is possible to use one same product key in different PCs.
(Can not be used at the same time.)

USB dongle version SK-LOG-D

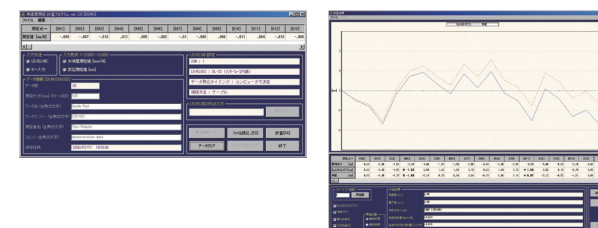
For those who wish to use in an environment **WITHOUT internet access**.

Order No.	Model No.	Version
010077	SK-LOG-W	Web authentication
010078	SK-LOG-D	USB dongle



LEVELNIC MEASURING SOFTWARE (Straightness)

Use to easily calculate straightness when connect to Levelnic with cable or wireless connection!

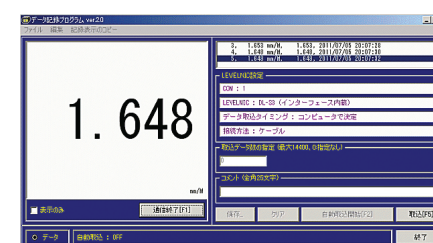


•Support OS : WindowsXP•Vista•7•8•10•11
Please refer to P14~15 for compatible models.

Order No.	Model No.	Software Language
010066	ST	Japanese
010070	ST-E	English
010073	ST-C	Chinese



DATA RECORDING SOFTWARE



•Record the Levelnic signal in a text file.
•Support OS : WindowsXP•Vista•7•8•10•11

Please refer to P14~15 for compatible models.

Order No.	Model No.	Software Language
010067	LEVELOG	Japanese
010068	LEVELOG-E	English

DATA TRANSFER SOFTWARE

Able to transfer data to Excel and memo pad for freely edit!

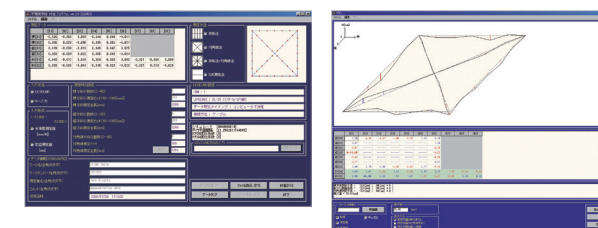
•Able to adjust output interval to Excel software and others.
•Support OS : WindowsXP•Vista•7•8•10

Order No.	Model No.
010076	L-LOG



LEVELNIC MEASURING SOFTWARE (Flatness)

Use to easily calculate flatness when connect to Levelnic with cable or wireless connection!



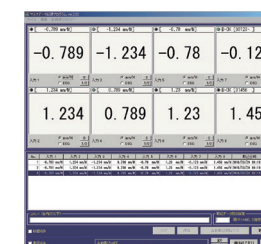
•Support OS : WindowsXP•Vista•7•8•10•11
Please refer to P14~15 for compatible models.

Order No.	Model No.	Software Language
010065	FL	Japanese
010069	FL-E	English
010072	FL-C	Chinese



MULTI-DATA RECORDING SOFTWARE

For displaying measurement values on PC screen and loading its data into PC for up to eight units of Levelnic.

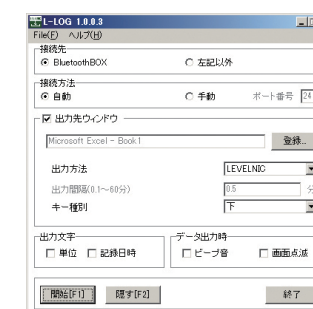


•Loadable up to 14,400 data points which can be saved as text file.
•Selectable data loading - Manual loading / Auto-loading at set time interval.

•Support OS : WindowsXP•Vista•7•8•10•11
*Requires as many COM ports or USB ports as the number of Levelnic to be connected.

Please refer to P14~15 for compatible models.

Order No.	Model No.	Software Language
010074	LEVELOG	Japanese
010075	LEVELOG-E	English



Please refer to P14~15 for compatible models.

LEVELNIC WIRELESS ADAPTER DL-BW2(USB)/DL-EX

Compact wireless adapter dedicated for DL-S3 series! DL-EX can send measurement data to i-OS and Android tablets and smartphones.

DL-BW2 (USB)



Mounting example to DL-S3

Model No.	DL-BW2(USB)	DL-EX
Features	● Paired with attached receiver unit	● Connected by Bluetooth HID to tablet and smart phone for keyboard use ● Device name is able to be identified by its individual number ● Output data includes device name to prevent receiving mistakes
Dimension	L93 × W67 × H34mm	

	Order No.	Model No.	Weight
NEW!	010057	DL-BW2(USB)	140g
NEW!	010056	DL-EX	140g

LEVELNIC WIRELESS ADAPTER DL-BW/DL-BW(USB)

Allows Bluetooth wireless communication by mounting to your current Levelnic. Wireless range of 50-100mm line-of-sight.



Mounting example to DL-S3C

- Eliminating cables greatly improves work efficiency.
- Please refer to P14~15 for compatible models.

Dimension	L143 × W50 × H173mm (incl. transmission unit)			
Order No.	Model No.	Receiving Unit Type	Weight	
010038	DL-BW	D-SUB9*1	530g	
010055	DL-BW(USB)	USB	530g	

*1 : PC without D-USB 9 pin port (RS-232C) requires USB serial transmitter (optional).

Bluetooth BOX

Attach Bluetooth Box to compatible Levelnic for wireless data transmitting!

- Can be used in any countries by using a locally available Bluetooth dongle.
- Eliminating cables greatly improves work efficiency.
- Answer back function:
DATA LED blinks to let you know when recording is completed on the PC.



Mounting example to DL-S3

Dimension	L82 × W35 × H24mm		
Order No.	Model No.	Weight	
152036	DTW-DL01	80g	

Please refer to P14~15 for compatible models.

PC CONNECTION CABLE DL-P6

- Length : $\phi 3\text{mm} \times 5\text{m}$
 - 9 pin connector (for serial port)
- Please refer to P14~15 for compatible models.

Order No.	Model No.
010040	DL-P6



LEVELNIC SD LOGGER 3

Measured value is recorded directly on SD card! Loading data automatically at a specific interval by script function.



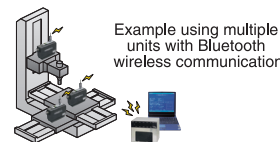
- To record data on sites that PC is not suitable.
- Recorded data by text format can be used with other software.

Please refer to P14~15 for compatible models.

Dimension	W120 × D100 × H39mm		
Order No.	Model No.	Weight	
010044	DT-MCK3-XS-SK	170g	

LEVELNIC DATA SYSTEM

Enables data display and saving of up to 8 units of Levelnic with one PC!

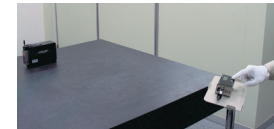


- Up to 8 units of Levelnic can be connected at once.
 - Data display & recording software included (auto capture function).
- Please refer to P14~15 for compatible models.

Dimension	W180 × H150 × D130mm			
Order No.	Model No.	Software Language	Weight	
010037	DL-ADP	Japanese	1.6kg	
010089	DL-ADP-E	English	1.6kg	

LEVELNIC DISPLAY

Can display data at a distance! Check value of the Levelnic mounted on high places and on machine tools at hand. The work for two can be done by one person.



Combination example with DL-S2W

- The operation buttons on the unit allows 0-call and 1/2-call to be made without PC. (DL-S2W only)

Please refer to P14~15 for compatible models.

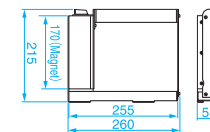
Dimension	L116 × W62 × H48mm		
Order No.	Model No.	Weight	
010024	DL-D4	330g	

L-TYPE BASE FOR LEVELNIC DL-SL

Mounting Levelnic on magnetic L-type base enables Z-axis measurement as well as X-axis and Y-axis.



● Dimensions Base (Units:mm)

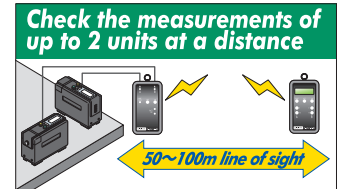


- Applicable Levelnic : DL-S4W series, DL-S3 series, DL-S2W series, DL-m5, DL-m5W
- Vertical (Z-axis) measurement is available by applicable Levelnic mounted on.
- With a magnet for convenient Z-axis measurement. ● 130° V-groove

Order No.	Model No.	Base Squareness (mm)	Weight
010028	DL-SL	Within ± 0.04	4.9kg

TRANSMITTER/DISPLAY SET

For displaying measurements from 2 units of DL-S3 series in one handy device at the same time. Suitable for X and Y direction measurement.



- Leveling during assembly and installation of large machine tools that requires several people can be performed by one person.
- Measured data at height, in gaps and at a distance can be checked in hand.

Dimension	L147 × W81 × D35mm (incl. silicon cover and key ring clasp)			
Order No.	Model No.	Compatible Model	Weight	
010043	DL-D5	DL-S3 series • DL-S3L • DL-m3 *1	290g each *2	

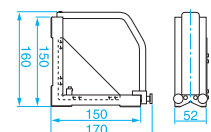
*1 : When used with DL-m3, the third decimal place is always displayed as 0.
*2 : Including batteries and silicone cover.

L-TYPE BASE FOR LEVELNIC DL-mL

Mounting Levelnic on L-type base enables measurement in Z-axis as well as X-axis and Y-axis!



● Dimensions Base (Units:mm)



- Applicable Levelnic : DL-m1 series, DL-m3 series, DL-m4
- Vertical (Z-axis) measurement is available by applicable Levelnic mounted on
- 130° V-groove *Base does not have magnetic capability.

Order No.	Model No.	Base Squareness (mm)	Weight
010022	DL-mL	Within ± 0.035	1.9kg

LEVELNIC BASE WITH ADJUSTABLE PITCH

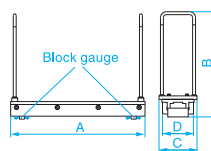
By attaching Levelnic to this base, any desired measurement pitch can be set.

- Applicable Levelnic : DL-S4W series, DL-S3 series, DL-S2W series, DL-S2 • DL-m5 • DL-m5W • EL-01A series.
- Base with mm graduation enables accurate setting of measuring pitch.
- Use 2pcs of included block gauges (15mm) on the measuring face.

Order No.	Model No.	Measurement pitch range (mm)	A (mm)	B (mm)	C (mm)	D (mm)	Weight
010020	LP-200	50~200	230	180	65	55	1.8kg
010021	LP-300	50~300	330	180	65	55	2kg



● Dimensions Base (Units:mm)



ALUMINUM CASE FOR LEVELNIC

Shock resistant aluminum case for Levelnic. Suitable for storage and carrying.

- Applicable Levelnic : LV-CS3 : DL-S4W series, DL-S3 series, DL-S2, DL-S1
LV-CM1 : DL-m1 series, DL-m3 series
LV-C2W : DL-S2W series
- For shock protection during transport.
*Levelnic is a precision instrument, we recommend to use a carrying case.



LV-CS3









LV-CM1










Order No.	Model No.	Dimensions (mm) *not including metal handle	Weight
010025	LV-CS3	362 × 235 × 185	1.50kg
010026	LV-CM1	250 × 215 × 150	0.97kg
010034	LV-C2W	362 × 235 × 185	1.50kg

HIGH PRECISION LEVEL LEVELNIC SERIES

△ : Available with restrictions on unit functions — : Not supported or other options are available

Product image								
Product name* Model No.			LEVELNIC DL-SXY	LEVELNIC DL-SXYW-S	LEVELNIC DL-SXYW-S (HID)	LEVELNIC DL-S4W Series	LEVELNIC DL-S4W (HID)	LEVELNIC DL-S2W Series
Reference page			4	4	4	5	5	5
Minimum reading			0.001mm/m	0.001mm/m	0.001mm/m	0.001mm/m* 0.0001°	0.001mm/m* 0.0001°	0.001mm/m* 0.0001°
Measuring range			± 5.000mm/m	± 5.000mm/m	± 5.000mm/m	± 5.00mm/m* ± 0.286°	± 5.00mm/m* ± 0.286°	± 5.000mm/m* ± 0.2865°
Wireless data output			○ (Sensor to display)	○ (Receiver unit included)	○ (Built-in Bluetooth)	○ (Receiver unit included)	○ (Built-in Bluetooth)	○ (Receiver unit included)
Wired data output			△ (Cable and display included)	○	○	○	○	—
Display measured value			△ (Use with wireless OFF)	○	○	○	○	—
Software for LEVELNIC	Integrated software for measuring instruments SK-LOG	P10	○ (Lite ver. included)	○ (Lite ver. included)	△ (Wired output only)	○	△ (Wired output only)	○
	Straightness software ST	P11	△ (for use in single-axis measurement)	—	—	○	△ (Wired output only)	○
	Flatness software FL	P11	△ (for use in single-axis measurement)	—	—	○	△ (Wired output only)	○
	Data recording software LEVELOG	P11	△ (for use in single-axis measurement)	—	—	○	△ (Wired output only)	○
	Multi-data recording software LEVELOG-M	P11	△ (for use in single-axis measurement)	—	—	○	△ (Wired output only)	○
	Data transfer software L-LOG	P11	△ (for use in single-axis measurement)	—	—	○	△ (Wired output only)	○
	Dedicated software	—	—	—	—	○ (Included)	—	○ (Included)
Wireless connection unit	LEVELNIC wireless adapter DL-BW2 (USB)	P12	△ (Mounting plate not supported)	—	△ (Mounting plate not supported)	—	△ (Mounting plate not supported)	—
	LEVELNIC wireless adapter DL-EX	P12	△ (Mounting plate not supported)	△ (Mounting plate not supported)	—	△ (Mounting plate not supported)	—	—
	LEVELNIC wireless adapter DL-BW / DL-BW (USB)	P12	○ (Use in self-supporting)	—	○ (Use in self-supporting)	—	○ (Use in self-supporting)	—
	Bluetooth BOX DTW-DL01	P12	△ (1-axis measurement use, mounting plate not supported)	—	—	△ (Mounting plate not supported)	△ (Mounting plate not supported)	—
Wired connection cable	PC connection cable DL-P6	P12	○ (Included)	○	○	○	○	—
	Connection cable for LEVELNIC EL EL-K2	P12	—	—	—	—	—	—
Other options	LEVELNIC SD logger 3 DT-MCK3-XS-SK	P12	○	△ (Wired output use)	△ (Wired output use)	△ (Wired use)	△ (Wired use)	—
	LEVELNIC Data collection adapter DL-ADP	P12	△ (1-axis measurement use)	—	—	△ (Wired use)	△ (Wired use)	○
	LEVELNIC Display DL-D4	P13	—	—	—	△ (Wired use)	△ (Wired use)	○
	Transmitter/ Display set DL-D5	P13	—	—	—	△ (Wired use)	△ (Wired use)	—
	L-type base for LEVELNIC DL-SL	P13	—	—	—	○	○	○
	L-type base for LEVELNIC DL-mL	P13	—	—	—	—	—	—
	LEVELNIC Base with adjustable pitch LP-200 / LP-300	P13	—	—	—	○	○	○
	Aluminum case for LEVELNIC LV-CS3	P13	—	—	—	○ (Included)	○ (Included)	—
	Aluminum case for LEVELNIC LV-CM1	P13	—	—	—	—	—	—
	Aluminum case for LEVELNIC LV-C2W	P13	—	—	—	—	—	○ (Included)

*1 : When used with DL-m3, the third decimal place is always displayed as 0.

								
LEVELNIC DL-S3 Series	LEVELNIC L-TYPE DL-S3L	LEVELNIC DL-mXY	LEVELNIC DL-m5	LEVELNIC DL-m5W	LEVELNIC DL-m4	LEVELNIC DL-m3 Series	LEVELNIC DL-m3LS	LEVELNIC EL-01A Series
6	6	7	7	7	9	8	8	9
0.001mm/m* 0.0001°	0.001mm/m* 0.0001°	0.01mm/m	0.01mm/m	0.01mm/m	0.01mm/m	0.01mm/m	0.01mm/m	± 0.2mm/m (1 div. 0.01mm/m) ± 1mm/m (1 div. 0.05mm/m) ± 2mm/m (1 div. 0.1mm/m)
± 5.00mm/m* ± 0.286°	± 5.00mm/m* ± 0.286°	± 5.00mm/m	± 5.00mm/m	± 5.00mm/m	± 5.00mm/m	± 5.00mm/m	± 5.00mm/m	—
— (Optional unit available)	— (Optional unit available)	— (Optional unit available)	— (Optional unit available)	○ (Receiver unit included)	— (Optional unit available)	— (Optional unit available)	— (Optional unit available)	—
○	○	○	○	○	○	○	○	○ (Analog voltage output)
○	○	○	○	○	○	○	○	○
○	○	○	○	○	○	○	○	—
○	○	△ (1-axis measurement use)	○ (Supported by DL-m3 selection)	○ (Supported by DL-m3 selection)	○ (Supported by DL-m3 selection)	○	○	—
○	○	△ (1-axis measurement use)	○ (Supported by DL-m3 selection)	○ (Supported by DL-m3 selection)	○ (Supported by DL-m3 selection)	○	○	—
○	○	△ (1-axis measurement use)	○ (Supported by DL-m3 selection)	○ (Supported by DL-m3 selection)	○ (Supported by DL-m3 selection)	○	○	—
○	○	△ (1-axis measurement use)	○ (Supported by DL-m3 selection)	○ (Supported by DL-m3 selection)	○ (Supported by DL-m3 selection)	○	○	—
○	○	△ (1-axis measurement use)	○ (Supported by DL-m3 selection)	○ (Supported by DL-m3 selection)	○ (Supported by DL-m3 selection)	○	○	—
—	—	—	—	—	—	—	—	—
○	△ (Mounting plate not supported)	△ (Mounting plate not supported)	△ (Mounting plate not supported)	—	△ (Mounting plate not supported)	△ (Mounting plate not supported)	△ (Mounting plate not supported)	—
○	△ (Mounting plate not supported)	△ (Mounting plate not supported)	△ (Mounting plate not supported)	△ (Mounting plate not supported)	△ (Mounting plate not supported)	△ (Mounting plate not supported)	△ (Mounting plate not supported)	—
○	○	○ (Use in self-supporting)	○ (Use in self-supporting)	—	○ (Use in self-supporting)	○ (Use in self-supporting)	○ (Use in self-supporting)	—
○	△ (Mounting plate not supported)	△ (1-axis measurement use)	○	○	○	○	△ (Mounting plate not supported)	—
○	○	○	○	○	○	○	○	—
—	—	—	—	—	—	—	—	○
○	○	○	○	△ (Wired use)	○	○	○	—
○	○	△ (1-axis measurement use)	○	△ (Wired use)	○	○	○	—
○	○	△ (1-axis measurement use)	○	△ (Wired use)	○	○	○	—
○	○	△ (1-axis measurement use)	△ (+1)	△ (Wired use, +1)	△ (+1)	△ (+1)	△ (+1)	—
○	—	—	○	○	—	—	—	—
—	—	—	—	—	○	○	—	—
○	—	—	○	○	—	—	—	○
○ (Included)	—	—	—	—	—	—	—	—
—	—	—	—	—	—	○ (Included)	—	—
—	—	—	—	—	—	—	—	—