

LEVELNIC DL-S4W SERIES

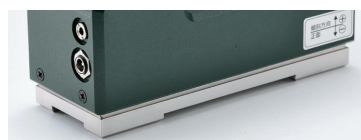


HOW TO MOVE

The latest model of Levelnic series. Built-in wireless.

Measurement value can be checked both on PC screen and the device's display panel.

- High precision Digital Level
- Resolution 0.001mm/m
- Switchable between wired and wireless
- Stainless steel base type that not requires rust prevention maintenance (DL-S4W SUS)



DL-S4W SUS



DL-S4W

For vertical measurement▶
L-type Base

P127

For setting a fixed pitch▶
Levelnic Base with Adjustable Pitch

P137

For flatness and straightness calculation▶
Levelnic Measurement Software

P138
~139

Rust prevention▶
Zerust Film for Steel

P380

USE

- High precision leveling of machine tools and surface plates. Straightness and flatness measurement.

MATERIAL

- Body: Aluminum

FEATURES

- Wireless data transmission
- PC screen becomes display of Levelnic
- Measurement data can be displayed on PC, using receiver and data display software
- Switchable between wireless / wired for saving of electricity and long-time use
- USB receiving unit installed. The driver is supported by the automatic recognition system.
- Equipped with two rechargeable batteries, enables running measuring by using a spare battery while the other is being charged
- Custom-made base can be attached to the threaded screw holes (M5 × P0.8) at the bottom base

SPECIFICATIONS

Measuring Range*1	± 5.00mm/m ± 0.286°
Minimum Reading	0.001mm/m 0.0001° (within ± 1.999mm/m) 0.01mm/m 0.001° (over ± 2mm/m)
Operating Temperature	0 ~ 40°C
Accuracy*2	Operating temperature 17 ~ 23°C ± 0.85% rdg (within ± 1.999mm/m) ± 1.0% rdg (over ± 2mm/m) Operating temperature 0 ~ 40°C ± 2.6% rdg (within ± 1.999mm/m) ± 2.7% rdg (over ± 2mm/m)
Repeatability	Within ± 0.005mm/m ± 0.0003°
Output Signal	Conforms to RS-232C, wired*4, built-in wireless system (Bluetooth Class1*5, wireless range: 30 ~ 50m)
Power Source	9V 006P type dry cell 1pc 8.4V 006P type rechargeable battery 1pc AC adapter (DC9V output · AC100V ~ 240V) included
Run time (continuous use)*3	Zinc-carbon cell: Approx. 12 hrs. (wireless use approx. 3 hrs.) Alkaline cell: Approx. 30 hrs. (wireless use approx. 10 hrs.) Rechargeable battery 10 hrs. (wireless use approx. 4 hrs.)
Dimensions	L158 × W61 × H107mm (Base dimensions: L150 × W55mm)
Accessories	● Shock resistant aluminum case ● Warranty · Instruction manual · Inspection report ● AC adapter (DC9V output · AC100V ~ 240V) ● 8.4V 006P type rechargeable battery 2pcs ● Battery charger ● Dedicated display software ● USB receiving unit

* 1: For DEG (°) Display mode, "0 (Zero)" before the decimal point is not displayed.

For 0.001mm/m (0.0001°) display mode, maximum reading which can be displayed is less than ± 1.999mm/m (± 0.1145°).

* 2: % rdg indicates the percentage of displayed value

* 3: May vary depending upon measurement conditions

* 4: PC without D-USB pin port (RS-232C) requires USB serial transmitter (optional)

* 5: Our Bluetooth system qualification is with TELEC (Japan), FCC (U.S.A), CE (EU), KCC (South Korea)

Order No.	Model No.	Software Language	Base Material	Weight
010053	DL-S4W	Japanese	Cast iron	2.0kg
010111	DL-S4W SUS		Stainless steel SUS303	2.0kg
010085	DL-S4W-E	English	Cast iron	2.0kg

LEVELNIC DL-S3 SERIES



HOW TO MOVE

High accuracy Level with simple & clear operation.
The world's first Digital Level with built-in Microcomputer.

- High precision Digital Level
- Resolution 0.001mm/m
- Rechargeable Battery (DL-S3C / DL-S3C SUS)
- Stainless steel base type that not requires rust prevention maintenance (DL-S3 SUS / DL-S3C SUS)



For vertical measurement L-type Base P127	For wireless communication Wireless Adapter P131
For display measured value for two connections Transmitter and display set P132	For setting a fixed pitch Levelnic Base with Adjustable Pitch P137
For flatness and straightness calculation Levelnic Measurement Software P138 ~139	Rust prevention Zerust Film for Steel P380

USE

- High precision leveling of machine tools and surface plates.
Straightness, flatness and vertical measurement.

MATERIAL

- Body: Aluminum

FEATURES

- Easy to fix the datum point, divide measurement value into halves with one-touch operation (with "0" cal. switch, 1/2 cal. switch)
- Measurement value can be output with RS232 signal
- Custom-made base can be attached to the threaded screw holes (M5 × P0.8) at the bottom base
- DL-S3C is rechargeable type. It can be charged when not in use.

SPECIFICATIONS

Model No.	DL-S3/DL-S3 SUS	DL-S3C/DL-S3C SUS
Measuring Range*1	$\pm 5.00\text{mm/m} \cdot \pm 0.286^\circ$	
Minimum Reading	0.001mm/m · 0.0001° (0 ~ ± 2mm/m · 0 ~ ± 0.115°) 0.01mm/m · 0.001°	
Operating Temperature	0 ~ 40°C	
Accuracy *2	Operating temperature 17 ~ 23°C $\pm 0.85\%\text{rdg}$ (0 ~ ± 2mm/m · 0 ~ ± 0.115°) $\pm 1.0\%\text{rdg}$ (± 2 ~ ± 5mm/m · ± 0.115° ~ ± 0.286°) Operating temperature 0 ~ 40°C $\pm 2.6\%\text{rdg}$ (0 ~ ± 2mm/m · 0 ~ ± 0.115°) $\pm 2.7\%\text{rdg}$ (± 2 ~ ± 5mm/m · ± 0.115° ~ ± 0.286°)	
Repeatability	Within $\pm 0.005\text{mm/m} \cdot \pm 0.0003^\circ$	
Output Signal	Conforms to RS-232C *4	
Charging time	—	12 hrs. (when fully charged)
Power Source	9V 006P type dry cell 1pc AC adapter (DC9V output · AC100V ~ 240V) included	Ni-MH battery (8.4V 200mAh)
Run time (continuous use) *3	Zinc-carbon cell: Approx. 10 hrs. Alkaline cell: Approx. 20 hrs.	12 hrs. charge: Approx. 9 hrs. 8 hrs. charge: Approx. 6 hrs. 4 hrs. charge: Approx. 2 hrs.
Dimensions	L172 × W65 × H129mm (base dimension: L150 × W55mm)	
Accessories	● Shock resistant aluminum case ● Warranty · Instruction manual · Inspection report ● AC adapter (DC9V output · AC100V ~ 240V) ● 9V dry cell	● Shock resistant aluminum case ● Warranty · Instruction manual · Inspection report ● AC adapter (DC15V output) ● Ni-MH battery (8.4V 200mAh)

*1: For DEG (°) Display mode, "0 (Zero)" before the decimal point is not displayed.

For 0.001mm/m (0.0001°) display mode, maximum reading which can be displayed is less than $\pm 1.999\text{mm/m}$ ($\pm 0.1145^\circ$).

*2: % rdg indicates the percentage of displayed value

*3: May vary depending upon measurement conditions

*4: PC without D-USB pin port (RS-232C) requires USB serial transmitter (optional)

Order No.	Model No.	Battery Type	Base Material	Weight
010013	DL-S3	9V dry cell	Cast iron	2.2kg
010030	DL-S3C	Ni-MH battery		2.2kg
010112	DL-S3 SUS	9V dry cell	Stainless steel SUS303	2.2kg
010113	DL-S3C SUS	Ni-MH battery		2.2kg

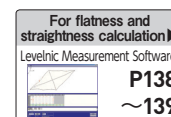
With V groove base - available on request

Model	DL-S3V
Tolerance	Within 0.1mm/m (on condition that the bubble in the sub-bubble tube is within the base line)
Tolerance Between Flat and V Groove	Within 0.05mm/m
Angle of V Groove	130° (for cylindrical objects up to $\phi 65\text{mm}$)

LEVELNIC DL-S3L



HOW TO MOVE



LEVELNIC DL-S3 with magnetic L-type base.

Magnetic base enables Z-axis measurement in addition to X-axis and Y-axis.



USE

- High precision leveling of machine tools and surface plates. Straightness, flatness and vertical measurement.

MATERIAL

- DL-S3 / Body: Aluminum
- L-type base: Cast iron

FEATURES

- Quick digital display of the measured value
- Measurement value can be output with RS-232 signal
- L-type magnetic base enables vertical (Z-axis) measurement
- With 130° V groove

POWER

- 9V dry cell 1pc
- AC adapter (DC9V output • AC100V~240V)

ACCESSORIES

- Shock resistant aluminum case
- Warranty • Instruction manual • Inspection report
- AC adapter (DC9V output • AC100V~240V)
- 9V dry cell

Please refer to DL-S3(P126) for detailed specifications for this unit

Order No.	Model No.	Base Squareness (mm)	Weight
010027	DL-S3L	Within ± 0.04	5.5kg

L-TYPE BASE FOR LEVELNIC DL-SL

LEVELNIC DL-S4 series • DL-S3 series • DL-S2W series,

equipped with L-type base enables measurement in the Z-axis in addition to X-axis and Y-axis



USE

- L-type base for Levelnic

MATERIAL

- Cast iron

FEATURES

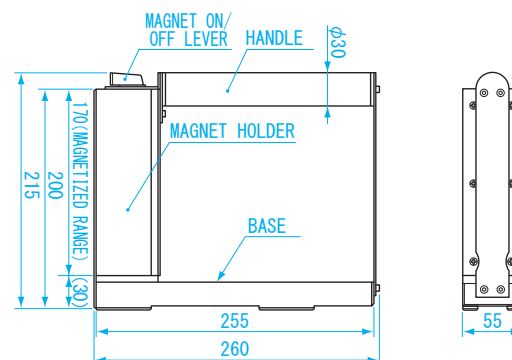
- Applicable Levelnic: DL-S4W series, DL-S3 series, DL-S2W series
- Vertical (Z-axis) measurement is available by applicable Levelnic mounted on
- L-type magnetic base enables vertical (Z axis) measurement
- With 130° V groove

ACCESSORIES

- Shock resistant aluminum case

● DIMENSIONS

Units: mm



Order No.	Model No.	Base Squareness (mm)	Weight
010028	DL-SL	Within ± 0.04	4.9kg

LEVELNIC DL-S2W SERIES



HOW TO MOVE

Wireless Data transmission. Same specification as DL-S3, and wireless system equipped.
The maximum longitudinal coverage is 50 ~ 100m.

- High precision Digital Level (Wireless by Bluetooth)
- Resolution 0.001mm/m
- Stainless steel base type that not requires rust prevention maintenance (DL-S2W SUS / DL-S2W (USB) SUS)



For vertical measurement▶

L-type Base

P127

For setting a fixed pitch▶

Levelnic Base with Adjustable Pitch

P137

For flatness and straightness calculation▶

Levelnic Measurement Software

P138 ~139

Rust prevention▶

Zerust Film for Steel

P380

USE

- High precision leveling of machine tools and surface plates.
- Straightness, flatness and vertical measurement.

MATERIAL

- Body: Aluminum

FEATURES

- Wireless data transmission
 - Wireless type Levelnic, useful for leveling and tilt measurement;
 - In overhead location
 - In places where the cable can not reach
 - PC screen becomes display of Levelnic
 - Measurement data can be displayed on PC, using receiver and data display software
 - Custom-made base can be attached to the threaded screw holes (M5 × P0.8) at the bottom base
- ※ This model does not have display on the unit. PC or display unit is required for display the measured values.

SPECIFICATIONS

Measuring Range		± 5.000mm/m · ± 0.2865°
Minimum Reading		0.001mm/m · 0.0001°
Operating Temperature		0 ~ 40°C
Accuracy ※1		Operating temperature 17 ~ 23°C ± 0.85% rdg (0 ~ ± 2mm/m, 0 ~ ± 0.1146°)
		± 1.0% rdg (± 2 ~ ± 5mm/m, ± 0.1146 ~ ± 0.2865°)
		Operating temperature 0 ~ 40°C ± 2.6% rdg (0 ~ ± 2mm/m, 0 ~ ± 0.1146°)
		± 2.7% rdg (± 2 ~ ± 5mm/m, ± 0.1146 ~ ± 0.2865°)
Repeatability		Within ± 0.005mm/m · ± 0.0003°
Radio System		Bluetooth Class1 ※2
Power Source		9V 006P type dry cell 1 pc (nominal voltage 8.4V rechargeable battery can also be used) AC adapter (DC9V output · AC100V ~ 240V) included
Run time (Continuous use)		Alkaline dry cell: Approx. 10 hrs (nominal voltage 8.4V rechargeable battery: Approx. 3 ~ 4 hrs.) ※ May vary depending upon measurement conditions
Dimensions		L173 × W59 × H147mm (H: up to top of antenna) (base dimensions: L150 × W55mm)
Accessories	DL-S2W, DL-S2W SUS DL-S2W-E	● Shock resistant aluminum case ● Warranty · Instruction manual · Inspection report ● AC adapter (DC9V output · AC100V ~ 240V) ● 9V dry cell ● Receiving unit ※3 ● Power source cable for wireless unit ● Dedicated display software
	DL-S2W (USB) SUS DL-S2W (USB)	● Shock resistant aluminum case ● Warranty · Instruction manual · Inspection report ● AC adapter (DC9V output · AC100V ~ 240V) ● 9V dry cell ● USB receiving unit ● Dedicated display software

※ 1: % rdg indicates percentage of displayed value

※ 2: Our Bluetooth system qualification is with TELEC (Japan), FCC (U.S.A), CE (EU), KCC (South Korea)

※ 3: PC without D-USB pin port (RS-232C) requires USB serial transmitter (optional)

Order No.	Model No.	Receiving Unit Type	Software Language	Base Material	Weight
010017	DL-S2W	D-SUB9	Japanese	Cast iron	2.1kg
010054	DL-S2W(USB)	USB		Cast iron	2.1kg
010114	DL-S2W SUS	D-SUB9		Stainless steel SUS303	2.1kg
010115	DL-S2W (USB) SUS	USB		Stainless steel SUS303	2.1kg
010029	DL-S2W-E	D-SUB9	English	Cast iron	2.1kg

LEVELNIC DL-m1 SERIES



HOW TO MOVE

Digital display with 0.01mm/m resolution. Unlike bubble level, there is no delay waiting for reading to settle, reducing human error.

■ High precision Digital Level ■ Stainless steel base type
■ Resolution 0.01mm/m (DL-m1 SUS)

USE

- High precision leveling of machine tools and surface plates.
Straightness and flatness measurement.

MATERIAL

- Body: Aluminum

FEATURES

- Compact, lightweight and simple operation
- Easy to fix the datum point, divide measurement value into half with one touch operation
- Fast output reduces installation time for field work

SPECIFICATIONS

Measuring Range	± 5.00mm/m
Minimum Reading	0.01mm/m
Operating Temperature	0 ~ 40°C
Accuracy ※	Operating temperature 17 ~ 23°C ± 0.02mm/m or ± 3% rdg whichever is larger (0 ~ ± 2mm/m) ± 4% rdg (± 2 ~ ± 5mm/m) Operating temperature 0 ~ 40°C ± 0.02mm/m or ± 5% rdg whichever is larger (0 ~ ± 2mm/m) ± 6% rdg (± 2 ~ ± 5mm/m)
Repeatability	Within ± 0.01mm/m
Power Source	9V dry cell 1 pc
Run time (continuous use)	Zinc-carbon cell: Approx. 45 hrs. / Alkaline cell: Approx. 90 hrs. ※ May vary depending upon the measurement conditions
Dimensions	L105 × W50 × H73mm (base dimensions: L100 × W50mm)
Accessories	● Shock resistant aluminum case ● Warranty · Instruction manual · Inspection report ● 9V dry cell

※ % rdg indicates the percentage of displayed value



DL-m1 SUS



Order No.	Model No.	Base Material	Weight
010014	DL-m1	Cast iron	880g
010117	DL-m1 SUS	Stainless steel SUS303	920g

For vertical measurement ▶

L-type Base

P130

Rust prevention ▶

Zerust Film for Steel

P380

LEVELNIC DL-m3 SERIES



HOW TO MOVE

Digital display with 0.01mm/m resolution. Unlike bubble level, there is no delay waiting for reading to settle, reducing human error.

■ High precision Digital Level ■ Stainless steel base type
■ Resolution 0.01mm/m (DL-m3 SUS)

With data output

USE

- High precision leveling of machine tools and surface plates.
Straightness and flatness measurement.

MATERIAL

- Body: Aluminum

FEATURES

- Digital display for easy to read measurement
- Compact, lightweight and simple operation
- Equipped with RS-232C output for combination use of Data recording, Straightness and Flatness software

SPECIFICATIONS

Measuring Range	± 5.00mm/m
Minimum Reading	0.01mm/m
Operating Temperature	0 ~ 40°C
Accuracy ※ ¹	Operating temperature 17 ~ 23°C ± 0.02mm/m or ± 3% rdg whichever is larger (0 ~ ± 2mm/m) ± 4% rdg (± 2 ~ ± 5mm/m) Operating temperature 0 ~ 40°C ± 0.02mm/m or ± 5% rdg whichever is larger (0 ~ ± 2mm/m) ± 6% rdg (± 2 ~ ± 5mm/m)
Repeatability	Within ± 0.01mm/m
Output Signal	Conforms to RS-232C ※ ²
Power Source	9V dry cell 1 pc
Run time (continuous use)	Zinc-carbon cell: Approx. 35 hrs. / Alkaline cell: Approx. 70 hrs. ※ May vary depending upon measurement conditions
Dimensions	L105 × W50 × H73mm (base dimensions: L100 × W50mm)
Accessories	● Shock resistant aluminum case ● Warranty · Instruction manual · Inspection report ● 9V dry cell

※ 1: % rdg indicates percentage of displayed value

※ 2: PC without D-USB pin port (RS-232C) requires USB serial transmitter (optional)



DL-m3 SUS



Order No.	Model No.	Base Material	Weight
010015	DL-m3	Cast iron	880g
010118	DL-m3 SUS	Stainless steel SUS303	920g

For vertical measurement ▶

L-type Base

P130

For flatness and straightness calculation ▶

Levelnic Measurement Software

P138 ~ 139

Rust prevention ▶

Zerust Film for Steel

P380

LEVELNIC

PRECISION
LEVEL

ANGLE

LEVEL

PROTRA
CTOR

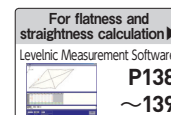
LEVELNIC DL-m3LS



HOW TO MOVE

Levelnic DL-m3 on L-type Base.

X-axis, Y-axis as well as Z-axis measurements are possible.



USE

- High precision leveling of machine tools and surface plates.
- Straightness, flatness and vertical measurement.

MATERIAL

- DL-m3 / Body: Aluminum
- L-type base: Cast iron

FEATURES

- Digital display
- Compact and lightweight
- Equipped with RS-232C output for combination use of Data recording, Straightness and Flatness software
- L-type base allows measurements in the vertical direction
- With 130° V groove

ACCESSORIES

- Shock resistant aluminum case
- Warranty · Instruction manual · Inspection report
- 9V dry cell

※ Base does not have magnetic capability

Please refer to DL-m3(P129) for detailed specifications for this unit

Order No.	Model No.	Base Squareness (mm)	Weight
010019	DL-m3LS	Within ± 0.035	2.8kg

LEVELNIC

PRECISION
LEVEL

ANGLE

LEVEL

PROTRA
CTOR

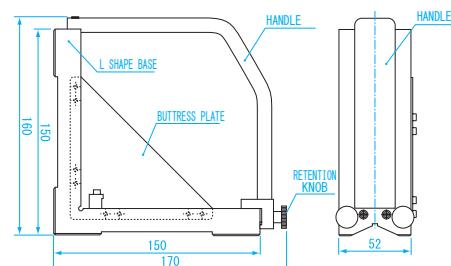
L-TYPE BASE FOR LEVELNIC DL-mL

Levelnic DL-m1, m3 mounted on base will be able to take vertical measurements



● DIMENSIONS

Units: mm



※ Base does not have magnetic capability

USE

- L-type base for Levelnic

MATERIAL

- Cast iron

FEATURES

- Applicable Levelnic: DL-m1 series, DL-m3 series
- Vertical (Z-axis) measurement is available by applicable Levelnic mounted on
- With 130° V groove

ACCESSORIES

- Shock resistant aluminum case

Order No.	Model No.	Base Squareness (mm)	Weight
010022	DL-mL	Within ± 0.035	1.9kg

BLUETOOTH BOX

Attach Bluetooth Box to applicable levelnic for wireless data transmitting.
Can be functioned in any countries by using Bluetooth dongle.

USE

- Wireless data transmitting is available by attaching to applicable Levelnics

MATERIAL

- Body: Aluminum
- Switch Panel: ABS

FEATURES

- RS-232C output signal from Levelnic is transmitted by Bluetooth
- Can be used in any country with a locally available dongle
- Eliminating cables greatly improves work efficiency



Mounting example to DL-S3

SPECIFICATIONS

Input	Levelnic RS-232C signal only		
Wireless	Bluetooth ※ Class depends on USB dongle		
Applicable USB Dongle adaptor	Bluetooth 3.0 and higher, SPP profile		
Power Source	Lithium polymer battery (chargeable with USB charging cable)		
Run time (continuous use)	Approx. 7 hrs.	Charging	Approx. 2 hrs.
Dimensions	L82 × W35 × H24mm		
Applicable Levelnic	DL-S3 series, DL-m3 series, DL-m3LS, DL-D3, DL-S3L		
Accessories	Data cable, USB charging cable, mounting plate, instruction manual, Bluetooth USB dongle adaptor Class 1 (Japan Only)		

Order No.	Model No.	Weight
152036	DTW-DL01	80g



LEVELNIC

PRECISION
LEVEL

ANGLE

LEVEL

PROTRA
CTOR

LEVELNIC WIRELESS ADAPTER DL-BW / DL-BW (USB)

Allows communicating with Levelnic using Bluetooth.
Wireless range of 50-100mm line-of-sight.

USE

- Wireless adapter for Levelnic

MATERIAL

- Body: Stainless

FEATURES

- The RS232C output signal is transmitted using Bluetooth wireless
- Eliminating cables greatly improves work efficiency



Mounting example to DL-S3C

SPECIFICATIONS

Input	Levelnic RS-232C signals (Levelnic use only)		
Wireless	Bluetooth Class1 *1		
Power Source	AA battery 6 pcs (rechargeable batteries can be used)		
Run time (continuous use)	Alkaline cell: Approx. 70 hrs. / Zinc-carbon cell: Approx. 30 hrs. 1700mAh rechargeable battery: Approx. 45 hrs. ※ May vary depending upon measurement conditions		
Dimensions	L143 × W50 × H173mm (including transmission unit)		
Applicable Levelnic	DL-S3 series, DL-S3L, DL-m3, DL-m3LS, DL-D3 ※ DL-S3 series can direct mount		
Accessories	Mounting parts, receiving unit, USB power cable for receiving unit (DL-BW only), AA battery × 6, instruction manual		

※ A small thermal printer can not be used

※ 1: Our Bluetooth system qualification is with TELEC (Japan), FCC (U.S.A), CE (EU), KCC (South Korea)

※ 2: PC without D-USB pin port (RS-232C) requires USB serial transmitter (optional)

Order No.	Model No.	Receiving Unit Type	Weight
010038	DL-BW	D-SUB9 *2	530g
010055	DL-BW (USB)	USB	530g

TRANSMITTER / DISPLAY SET

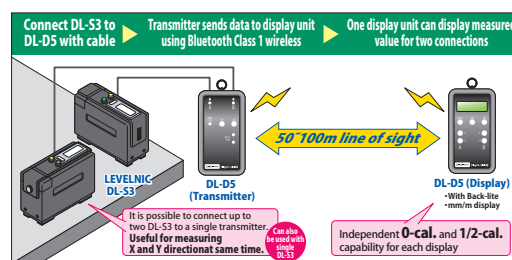
For displaying measurements from two DL-S3 series products in one handy device at the same time.
Suitable for X and Y direction measurement.

USE

- Transmit and display measurements for up to two Levelnic DL-S3 series products

FEATURES

- Simultaneous display of two connected DL-S3 series products. Useful for measuring X and Y directions.
- Eases installation of large machine tools by allowing multiple operators to work at same time
- Measured data is more easily visible, especially when used in locations which are remote or have low clearance height
- Since transmitter and receiver are a paired set, there is no need to set up after purchase -- it can be used immediately



SPECIFICATIONS

	Transmitter	Display
Input	Levelnic DL-S3 series external signal (×2)	—
Display	—	16 char × 2 lines character size = 4.9 × 2.5mm with backlight
Wireless	Bluetooth Class1 ^{※1}	
Communication Range	50 ~ 100m line-of-sight (depending on conditions)	
Operating Temperature	0 ~ 40°C	
Power	2 × AA battery (can also use commercially available rechargeable batteries)	
Operating life (continuous use)	Communicating with display device: Approx. 17 hrs. attempting communication with display: Approx. 3 hrs.	Alkaline cells: Approx. 8 hrs.
Dimensions	144 × W76 × D27mm (including lanyard ring) (when mounted in silicone cover: L147 × W81 × D35mm)	
Accessories	2 × connecting cable (approx. 80cm length) 2 × AA battery, silicone cover	2 × AA battery, silicone cover

※ 1: Our Bluetooth system qualification is with TELEC (Japan), FCC (U.S.A), CE (EU), KCC (South Korea)

※ 2: The value of three decimal places digit of the display may show inappropriate number when using DL-m3

※ 3: Including batteries and silicone cover

Order No.	Model No.	Compatible Model	Weight
010043	DL-D5	DL-S3 series • DL-S3L • DL-m3 ^{※2}	290g each ^{※3}

LEVELNIC DISPLAY

Can display data at a distance. Enables measurement process to be done by one person.
The work for two can be done by one person.

USE

- Levelnic measurement data display

MATERIAL

- Body: Stainless steel

FEATURES

- Can divide measurement value into half with one-touch operation (DL-S2W series only)

SPECIFICATIONS

Display Range	As per Levelnic spec.
Minimum Reading	As per Levelnic spec.
Operating Temperature	0 ~ 40°C
Input Signal	Conforms to RS-232C (Levelnic digital output signal only)
Power Source	9V dry cell (nominal voltage 8.4V rechargeable battery can also be used) / AC adaptor (included)
Run time (continuous use)	With wireless connection: Alkaline cell: Approx. 5 hrs. With cable connection: Alkaline cell: Approx. 60 hrs. ※ May vary depending upon measurement conditions
Dimensions	L116 × W62 × H48mm
Applicable Levelnic	DL-S3 series, DL-S3L, DL-m3 series, DL-m3LS, DL-S2W series, DL-S4W series (wired) ※ DL-P5AD, DL-P6 can also use cable connection ※ DL-S2W, DL-BW can connect using built-in wireless capability ※ DL-S4W (USB receiving unit), DL-S2W (USB), DL-BW (USB) cannot be used on this unit
Accessories	AC adaptor (DC9V output • AC100V ~ 240V), 9V dry cell, instruction manual

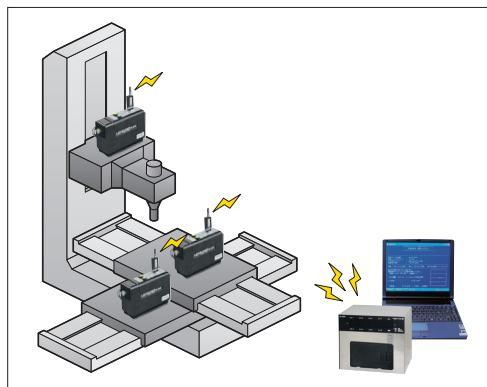


Combination example with DL-S2W

Order No.	Model No.	Weight
010024	DL-D4	330g

LEVELNIC DATA SYSTEM

Enables data display and saving of up to eight Levelnic with one PC



Example using multiple units with Bluetooth wireless communication

USE

- For data management of multiple Levelnics

MATERIAL

- Body: Stainless steel

FEATURES

- Eight Levelnics can be connected at once
- Data display & recording software included (auto capture function)

SPECIFICATIONS

Order No.	Model No.	Software Language	Weight
010037	DL-ADP	Japanese	1.6kg
010089	DL-ADP-E	English	1.6kg

Input	D-SUB (9 pins, male) RS-232C compliant, 8 inputs (for Levelnic connection only) 1200 baud, 1 stop bit, no parity, no handshaking
Output	D-SUB (9 pins, male)* RS-232C compliant, 1 output (PC connection) 9600 baud, 1 stop bit, no parity Hardware flow control
Operating Temperature	0 ~ 40°C
Power Source	AC100V adapter (DC9V output) AA batteries 6 pcs (rechargeable battery can also be used) ※ Run time depends on number of Levelnics
Dimensions	W180 × H150 × D130mm
Applicable Levelnic	DL-S3 series, DL-S3L, DL-m3 series, DL-m3LS, DL-S2W series, DL-S4W series (wired) ※ DL-P5AD, DL-P6 can also use cable connection ※ DL-S2W, DL-BW can connect using built-in wireless capability ※ DL-S4W (USB receiving unit), DL-S2W (USB), DL-BW (USB) cannot be used on this unit
Accessories	Data recording software, RS-232C cross cable, AC adaptor (DC9V output 100V), AA battery × 6, instruction manual

※ PC without D-USB pin port (RS-232C) requires USB serial transmitter (optional)

LEVELNIC SD LOGGER 3

Measured value is recorded directly on SD card.

Loading data automatically at a specific interval by script function.

USE

- To record measured value by Levelnic
- Measured value can be recorded on SD card without PC

FEATURES

- To record data on sites that PC is not suitable
- Recorded data by text format can be used with other software
- Loading data automatically at a specific interval by script written in advance on SD card
- Paperless by saving data on SD card

SPECIFICATIONS



Input	Levelnic RS-232C signal
SD card	SD / SDHC Max. 32GB
Power	AC adapter (DC9V) included
Dimensions	W120 × D100 × H39mm
Applicable Levelnic	DL-S4W (wired), DL-S3 series, DL-S3L, DLm3 series, DL-m3LS, DL-D3

Order No.	Model No.	Weight
010044	DT-MCK3-XS-SK	170g

SEPARATE SYSTEM / LEVELNIC CABLE



HOW TO MOVE

■ High accuracy Digital Level

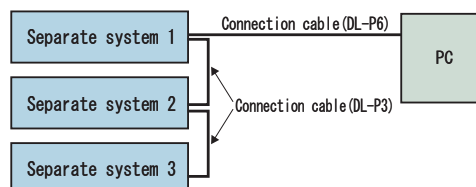
■ Resolution 0.001mm/m



- Digital sensor (DL-S2) • Digital display (DL-D3) • Cable (DL-P1) as combined system

※ PC is not included

■ Example of connecting multiple systems



USE

- High precision leveling of machine tools and surface plates. Straightness and flatness measurement for digital display.

MATERIAL

- Body: Aluminum
- Sensor base: Cast iron

FEATURES

- Display allows machine tool data obtained by Levelnic to be close at hand
- Output data is available on built in RS-232C interface for connection to computer or printer
- Multiple output signals can be combined onto one signal allowing expansion to 2, 3, or 4 devices for easy processing
- Easy to fix the Datum point, divide measurement value into half with one touch operation
- Custom-made base can be attached to the threaded screw holes (M5 × P0.8) at the bottom base

SPECIFICATIONS

Measuring Range	± 5.000mm/m • ± 0.2865°
Minimum Reading	0.001mm/m • 0.0001° 0.01mm/m • 0.001°
Operating Temperature	0 ~ 40°C
Accuracy	Operating temperature 17 ~ 23°C ± 0.85% rdg (0 ~ ± 2mm/m • 0 ~ ± 0.1146°) ± 1.0% rdg (± 2 ~ ± 5mm/m • ± 0.1146 ~ ± 0.2865°) Operating temperature 0 ~ 40°C ± 2.6% rdg (0 ~ ± 2mm/m • 0 ~ ± 0.1146°) ± 2.7% rdg (± 2 ~ ± 5mm/m • ± 0.1146 ~ ± 0.2865°)
Repeatability	Within ± 0.005mm/m • ± 0.0003°
Output Signal	Conforms to RS-232C*
Power Source	AA battery 6 pcs AC adapter (DC9V output • AC100V ~ 240V) included
Run time (continuous use)	Zinc-carbon cell: Approx. 27 hrs. Alkaline cell: Approx. 55 hrs. ※ May vary depending upon measurement conditions
Dimensions	DL-S2 L167 × W59 × H111mm (base dimension: L150 × W55mm) DL-D3 L235 × W106 × H51mm DL-P1 Length: 5m (standard cable) / DL-P3 Length: 4.5m
Accessories	● Shock resistant aluminum case ● Warranty • Instruction manual • Inspection report ● AC adapter (DC9V output • AC100V ~ 240V)

※ PC without D-USB pin port (RS-232C) requires USB serial transmitter (optional)

Order No.	Product	Model No.	Weight
010023	DISPLAY UNIT	DL-D3	1kg
010012	LEVELNIC	DL-S2	2kg
010031	CONNECTING CABLE FOR LEVELNIC	DL-P1	400g
010033	CONNECTING CABLE FOR DISPLAY UNIT	DL-P3	100g

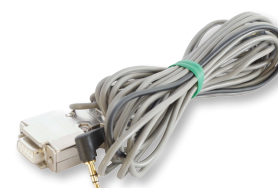
■ PC connection cable

USE

- For connecting Levelnic to PC

SPECIFICATIONS

- Length: φ3mm×5m
- 9 pins connector (serial port connection)
- Applicable Levelnic: DL-S4W series, DL-S3 series, DL-S3L, DL-m3 series, DL-m3L, Separate system
- ※ PC without D-USB pin port (RS-232C) requires USB serial transmitter (optional)



Order No.	Model No.	Material
010040	DL-P6	2 cond. w/ shield (Cu)

Digital display with 0.01mm/m resolution.

Unlike bubble level, there is no delay waiting for reading to settle, reducing human error.

■ High precision Digital Level

■ Resolution 0.01mm/m



USE

- High precision leveling of machine tools and surface plates, straightness and flatness measurement

MATERIAL

- Body: Aluminum
- Base: Cast iron

FEATURES

- Faster response than bubble level
- Wider range of measurement than conventional level
- Measurement can be taken in difficult-to-see position by pressing hold switch and then reading

SPECIFICATIONS

Measuring Range	± 9.99mm/m
Minimum Reading	0.01mm/m
Operating Temperature	0 ~ 40°C
Accuracy ※1	Operating temperature 17 ~ 23°C ± 1.3% rdg Operating temperature 0 ~ 40°C ± 3.0% rdg
Repeatability	Within ± 0.01mm/m
Power Source ※2	9V dry cell 1 pc AC adapter (100V ~ 240V) (optional)
Run time (continuous use)	Zinc-carbon cell: Approx. 25 hrs. Alkaline cell: Approx. 50 hrs. ※ May vary depending upon measurement conditions
Dimensions	L159 × W78 × H104mm (base dimension: L150 × W55mm)
Accessories	● Shock resistant aluminum case ● Warranty · Instruction manual · Inspection report ● 9V dry cell

※ 1: % rdg indicates percentage of displayed value

※ 2: AC adapter sold separately

Order No.	Model No.	Weight
010011	DL-S1	2.0kg

With V groove base - available on request

Model	DL-S1V
Rolling Error	Within 0.1mm/m when the bubble of auxiliary bubble tube is centered
Plane and V groove error	Within 0.05mm/m
V groove angle	130° (for cylindrical objects up to ϕ 65mm)

LEVELNIC EL-01A SERIES

High-sensitive (0.01mm/m). Pendulum type level with analog output.
Three levels of sensitivity.

- High precision Analog Level
- Resolution 0.01mm/m

USE

- Leveling of machine tools and surface plates.
- Straightness and flatness measurements.

MATERIAL

- Body: Aluminum

FEATURES

- Quicker response than bubble level
- Sensitivity is switchable in three steps
- Connectable directly to commonly-available analog recorder through analog output
- Custom-made base can be attached to the threaded screw holes (M5 × P0.8) at the bottom base
- Pendulum system prevents any hysteresis errors and is not influenced by temperature change



SPECIFICATIONS

Sensitivity	I : 1Division = 0.01mm/m II : 1Division = 0.05mm/m III : 1Division = 0.1mm/m
Measuring Range (3 Range)	± 0.2mm/m (1Division 0.01mm/m) ± 1mm/m (1Division 0.05mm/m) ± 2mm/m (1Division 0.1mm/m)
Operating Temperature	0 ~ 40°C
Pointing Error	Within ± 0.5 Division
Repeatability Accuracy	Within ± 0.005mm/m
Output Signal	Analog output ± 200mV F.S. (for all range) Connectible load resistance: No less than 100 Ω
Power Source	9V dry cell 1 pc AC adapter (DC9V output · AC100V ~ 240V) included
Run time (continuous use)	Zinc-carbon cell: Approx. 25 hrs. Alkaline cell: Approx. 50 hrs. ※ May vary depending upon measurement condition
Base Dimension	L150 × W85 × H195mm ※ Excluding Handle (dimension: L150 × W55mm)
Accessories	● Shock resistant aluminum case ● Warranty · Instruction manual · Inspection report ● AC adapter (DC9V output · AC100V ~ 240V) ● 9V dry cell

Order No.	Model No.	Base Material	Weight
010005	EL-01A	Cast iron	2.9kg
010116	EL-01A SUS	Stainless steel SUS303	2.9kg

■ Connection Cable / EL-K2

USE

- Connects to analog recorder with analog output of EL-01A

SPECIFICATIONS

- Length: φ3 × 5m
- Recorder: Banana plug
- Levelnic: M3 plug

Order No.	Model No.	Weight
010082	EL-K2	150g

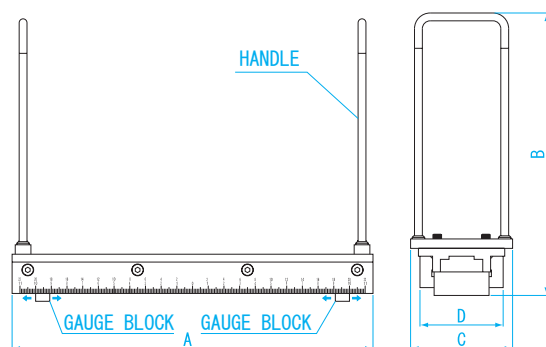
LEVELNIC BASE WITH ADJUSTABLE PITCH

By attaching Levelnic to this base, any desired measurement pitch can be set



LP-300

● DIMENSIONS



USE

- Setting a fixed pitch for straightness and flatness measurements

MATERIAL

- Carbon steel for machine structural use

FEATURES

- Applicable levelnic: DL-S4 series, DL-S3 series, DL-S2W series, DL-S2, EL-01A series
- The base is graduated in mm and enables setting measurement pitch
- Measuring face consists of 2 pcs of 15mm Gauge block

Units: mm

Model No.	A	B	C	D
LP-200	230	180	65	55
LP-300	330	180	65	55

Order No.	Model No.	Measurement pitch range (mm)	Weight
010020	LP-200	50 ~ 200	1.8kg
010021	LP-300	50 ~ 300	2kg

CARRYING CASE FOR LEVELNIC

Shock resistant aluminum case for Levelnic. Suitable for storage and carrying.



LV-CS3



LV-CM1

USE

- Carrying case for Levelnic
(Levelnic is a precision instrument, we recommend that you use a carrying case)

MATERIAL

- Body: Aluminum
- Inside: Urethane foam

FEATURES

- Applicable levelnic:
LV-CS3: DL-S4W series, DL-S3 series, DL-S2W series, DL-S2, DL-S1
LV-CM1: DL-m1 series, DL-m3 series
- Shock protection during transport

Order No.	Model No.	Dimensions (mm)	Weight
010025	LV-CS3	362 × 236 × 184	1.50kg
010026	LV-CM1	250 × 200 × 150	0.97kg

SOFTWARE FOR LEVELNIC

Software for Levelnic.

Simple operation and graphics for easy use and understanding.

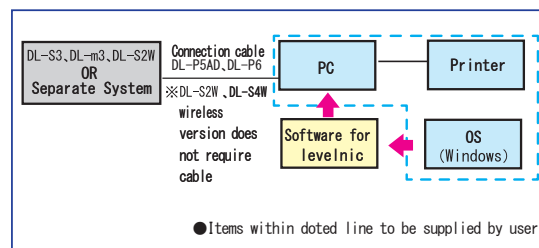
Straightness measurement computer software (ST) Flatness measurement computer software (FL)

- Greatly reduces measurement time by recording the results for straightness and flatness measurements
- For cabled and wireless system
- Supported OS: Windows XP, Vista, 7, 8, 10
- Direct input from DL-S4W series, DL-S3 series, DL-S3L, DL-S2W series, DL-S2+D3, DL-m3 series, DL-m3LS, and Separate System

■ Flatness measurement



■ Straightness measurement while connected to PC



No need to install the software to PC

Only drag and drop EXE file, and double click to start. Also can be used directly from USB memory.

Input selection

Data can be manually typed in from any level, including bubble tube type level

Input signal from Levelnic over RS-232C

With computer connected to the Levelnic output, sequential measurements taken at regular intervals can be used to calculate flatness and straightness for display, printing and storage. (saved measurement data can not be revised)

Input typed onto keyboard from bubble level for display, calculation and storage

Using a bubble level and keyboard to enter data, sequential measurement taken at regular intervals can be used for calculation, display and storage

Displacement measurements (μm) typed onto keyboard for display, calculation and storage

Measurement of displacement from a reference plane made with a linear gauge or dial indicator at regular intervals can be used in place of an electronic angle gauge (goniometer) and entered into keyboard for calculation, display and storage

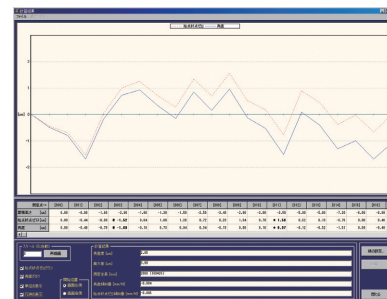
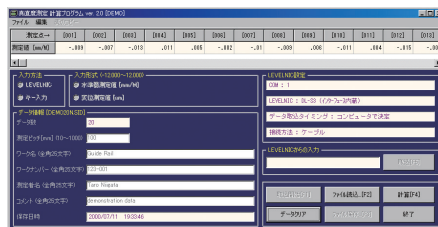
LEVELNIC MEASUREMENT SOFTWARE

Use to easily calculate straightness when connect to Levelnic with cable or wireless connection

Straightness software

- With Straightness software Levelnic can easily perform the straightness measurements that once required an autocollimator, and for a lower cost

■ Straightness measurement



USE

- Software to perform straightness calculations

FEATURES

- Both wired and wireless capability
- Model compatibility: DL-S4W series, DL-S3 series, DL-S3L, DL-S2W series, DL-S2+D3, DL-m3 series, DL-m3LS
- ※ Above compatibility applies for direct connection. Data can be manually typed in from any model, including bubble tube type level.

SPECIFICATIONS

- Supports: Windows XP, Vista, 7, 8, 10

Order No.	Model No.	Language
010066	ST	Japanese
010070	ST-E	English
010073	ST-C	Chinese



HOW TO MOVE



HOW TO MOVE

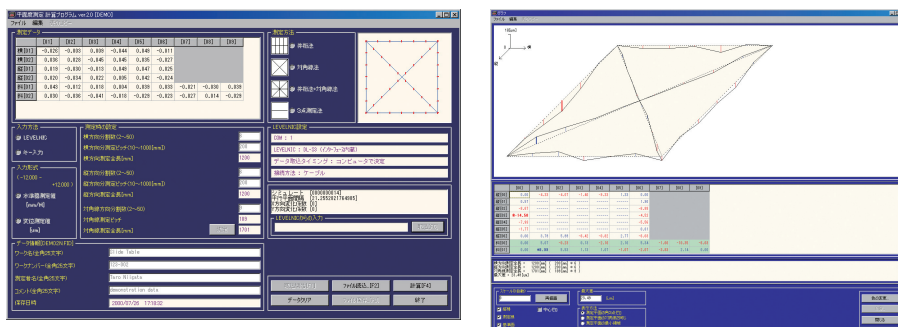
LEVELNIC MEASUREMENT SOFTWARE

Use to easily calculate flatness when connect to Levelnic with cable or wireless connection

Flatness software

With Flatness software Levelnic can easily perform the flatness measurements that once required an autocollimator, and for a lower cost

Flatness measurement



USE

- Software to perform flatness calculations

FEATURES

- Both wired and wireless capability
- Model compatibility: DL-S4W series, DL-S3 series, DL-S3L, DL-S2W series, DL-S2+D3, DL-m3 series, DL-m3LS
- ※Above compatibility applies for direct connection. Data can be manually typed in from any model, including bubble tube type level.

SPECIFICATIONS

- Supports: Windows XP, Vista, 7, 8, 10

Order No.	Model No.	Language
010065	FL	Japanese
010069	FL-E	English
010072	FL-C	Chinese



LEVELNIC DATA RECORDING SOFTWARE

Data recording software LEVELOG

USE

- Records output data from Levelnic

FEATURES

- Levelnic measurements are recorded to text file
- Model compatibility: DL-S4W series, DL-S3 series, DL-S3L, DL-S2W series, DL-S2+D3, DL-m3 series, DL-m3LS

SPECIFICATIONS

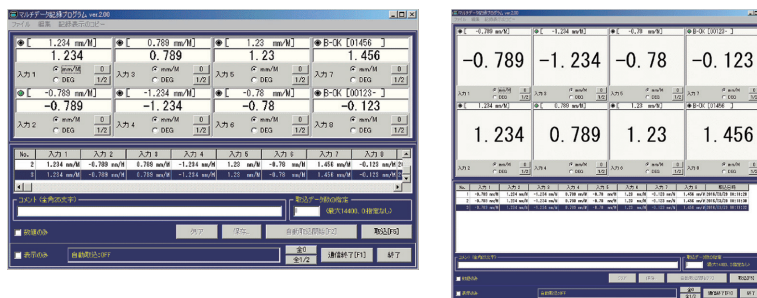
- Supports: Windows XP, Vista, 7, 8, 10

Order No.	Model No.	Language
010067	LEVELOG	Japanese
010068	LEVELOG-E	English

Data recording software LEVELOG-M

For data management of multiple use of Levelnic.

Display and record up to eight data channels.



USE

- For displaying measurement values on PC screen and loading its data into PC for up to eight units of Levelnic

FEATURES

- Loadable up to 14,400 data points which can be saved as plain text
- Selectable data loading - Manual loading / Auto-loading at set time interval
- Model compatibility: DL-S4W series, DL-S3 series, DL-S2W series, DL-S2+DL-D3, DL-m3 series

SPECIFICATIONS

- Supports: Windows XP, Vista, 7, 8, 10

※ Computer requires COM port or USB port for each connected Levelnic

Order No.	Model No.	Language
010074	LEVELOG-M	Japanese
010075	LEVELOG-M-E	English