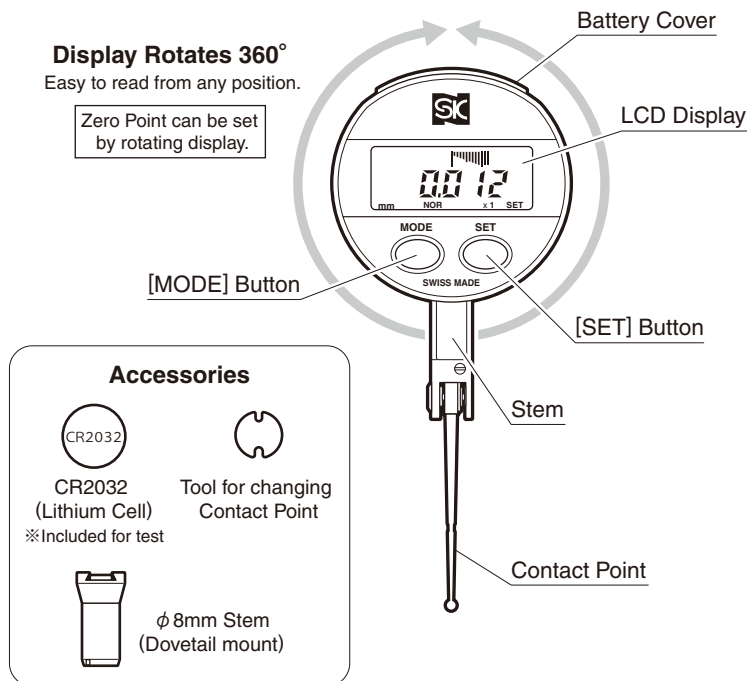


# SK DIGITAL S-LINE TEST INDICATOR (IP65) INSTRUCTION MANUAL

Model No. DET-234S1/DET-234S2 <combined>

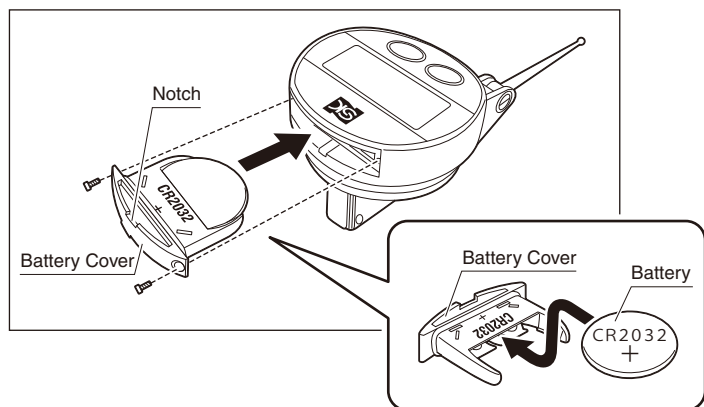
Thank you for purchasing the S-Line Digital Test Indicator.  
For proper operation, please read this manual thoroughly before use.

## PARTS IDENTIFICATION



## BATTERY REPLACEMENT

- Remove the (2x) battery screws using (+) PH#0 screwdriver. Place a small standard screwdriver in the notch to gently pry open the cover and slide out the battery.
- Insert the new battery following the polarity markings on the cover.
- Replace Battery Cover and tighten screws to secure.



**NOTICE** Use only CR2032 type battery.

## POWER

### [Power ON]

Press [MODE], or [SET] button to turn on power.

### [Power OFF]

Press and hold the [SET] button to turn off power.

※Power will switch off automatically if idle after approximately 2 hours.

(※If Auto Off is enabled.)

※When battery level is low, the **[B]** icon is displayed; please replace battery.

## FEATURES

- Small size and wide range probe angle for use in tight spaces.
- IP65 class waterproof rating.
- Display rotates 360°
- Digital LCD with analog bar display
- MIN, MAX, MIN MAX (DELTA, or TIR) functions
- Direction of measurement (+ / -) switchable
- Preset function
- Auto-off feature (approx. 2 hour)  
※when enabled
- Made in Switzerland

## SPECIFICATIONS

Model No.	DET-234S1	DET-234S2
Measurement Range	0-0.8mm	0-0.5mm
Resolution	0.001mm	
Displayed Resolution	0.01mm/0.001mm (switchable)	
Accuracy	0.01mm	
Backlash (Retrace) Error	0.004mm	0.005mm
Measurement Force	Less than 0.2N	
Repeatability	0.003mm	
Measurement Dir. Switchable	YES	
Mounting Shaft Diameter	Stem: φ 8mm	
Contact Point Length	12.5mm	36mm
Operating Temp. Range	5~40°C	
Weight	70g	

## TROUBLESHOOTING

Error Condition	Corrective Action
"Err 0" is Displayed on LCD	Read Error. Reset the sensor by pressing the [MODE] or [SET] button. ※If message is displayed again, there is possibility that the memory is corrupted; Please contact distributor or place of purchase.
Measured value is wrong	<ul style="list-style-type: none"> <li>● Clean measuring surfaces with lens tissue or similar.</li> <li>● Confirm and re-set 0-Point setting.</li> </ul>
<ul style="list-style-type: none"> <li>● LCD does not display</li> <li>● Displayed value is unstable</li> <li>● Display is hard to read</li> </ul>	<ul style="list-style-type: none"> <li>● Cycle power by removing and replacing battery.</li> <li>● Replace battery with new one.</li> </ul>

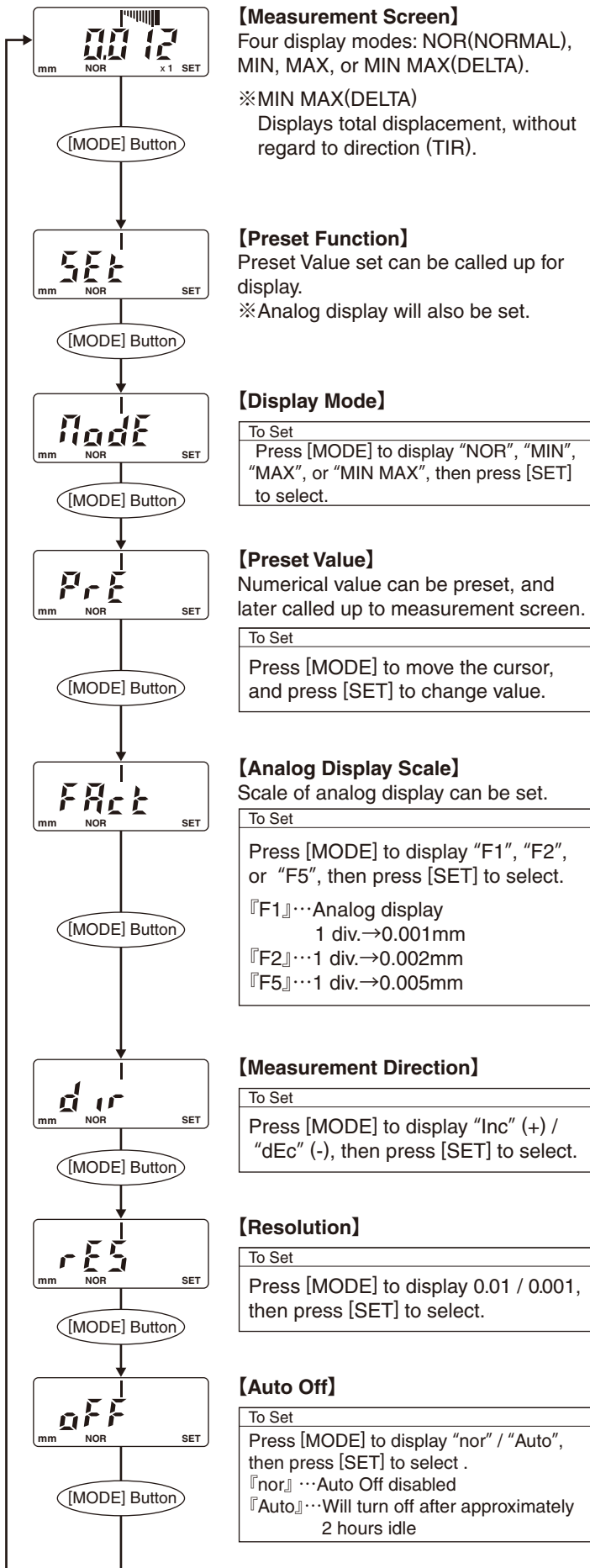
※If problem persists, or if you have any questions, please contact distributor or place of purchase.

※Please note, manufacturer is unable to respond to inquiries or provide service directly. Please contact distributor or place of purchase.

**See Reverse for "How to Use"→**

## FUNCTION SETUP

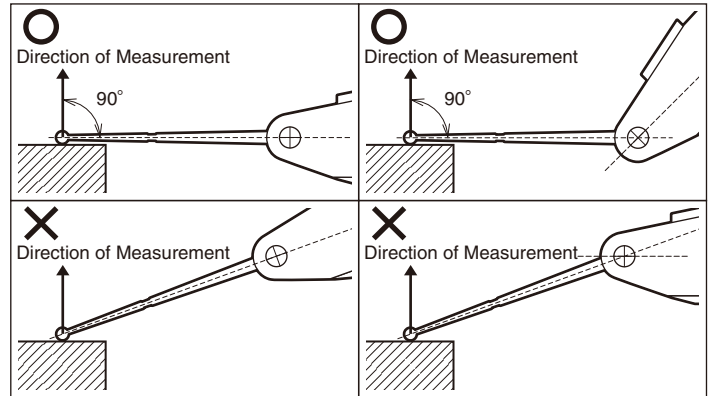
Press the [MODE] button to cycle through the functions in the sequence shown below. When desired function is displayed, press [SET] button to access the various settings.



※If no operation is performed after 5 seconds, display will return to measurement screen.

## HOW TO USE

- Mount securely, such as on optional Magnetic Base, and make sure that the Contact Point is parallel to the surface being measured, and perpendicular to the Measurement direction.



- Press [MODE], or [SET] to turn on power.
- Setting 0-Point  
With gauge in contact with measurement surface, press the [MODE] button. When display reads "SEt", press the [SET] button.  
(ref. "Function Setup - Preset Function")  
Display will read "0.00mm" or "0.000mm."  
※If "0.00mm" or "0.000mm" is not displayed, please refer to "Function Setup - Preset Value" to set value to 0.00mm, and then perform steps ① to ③.
- With Gauge body held fixed, and the probe in contact with the workpiece, the LCD will display the difference between workpiece and reference plane.

※If gauge can not be set up with contact point parallel to surface, the measurement will have a "cosine error."  
You can correct for this error using the following table.

displacement = measurement reading × cos α

angle (α)	cos α
5°	0.996
10°	0.985
15°	0.966
30°	0.866
45°	0.707
60°	0.500

## CAUTION

- This is a precision instrument, handle with care. Do not drop or subject to excessive forces.
- Keep away from high voltage and strong magnetic fields; instrument damage may result.
- Do not use or store in direct sunlight or locations with high temperatures such as in a car, or near a stove or heat source.
- When taking measurements, hold gauge securely, such as in magnetic base (sold separately.)
- Please do not disassemble or modify.
- Remove dust and cutting chips after use and apply rust preventative oil to metallic surfaces. Please keep out of reach of children.
- Do not use organic solvents to clean the body of the instrument.
- When not being used for a long period of time, please remove battery.
- Only use as directed. Improper use may cause accident or injury.

**Niigata seiki Co., Ltd.**

6-15-22, Tsukanome, Sanjo, Niigata, Japan, 955-0055  
Tel.: +81-256-31-5670 Fax.: +81-256-39-7730  
MAIL: intl.sales@niigataseiki.co.jp  
URL: http://www.niigataseiki.co.jp